

INTERNATIONAL
PREBOOK





FEARLESS PURSUIT

HELMETS 2-12

GOGGLES 13-21

RACEWEAR 22-55

OFFROAD 56-61

BOOTS 62-65

PROTECTION 66-85

LUGGAGE 86-90



JUSTIN
BRAYTON



HELMETS

FLY Racing's history is steeped in the development and performance of helmets. With the revolutionary Formula helmet family leading the way, technology has been taken to the next level. The Formula's Adaptive Impact System (AIS) whose high-performance ecosystem of structural designs and energy mitigating materials — including RHEON, a leading-edge viscoelastic material — is fine-tuned to greatly improve impact management over traditional helmets. Coupled with one of the best selling helmets in history, the Kinetic, FLY Racing's helmet lineup is unmatched throughout the powersports landscape. When it's time to make your next helmet selection, use your head and choose FLY Racing.



S U S P E N S I O N R E • D E F I N E D

FORMULA

ADAPTIVE IMPACT SYSTEM



THE NEW FORMULA HELMET

FLY Racing is proud to present the all new Formula helmet, one of the most advanced motocross helmets ever created. Tested on the most advanced equipment in the world, the Formula helmets over all performance is best in class in both high velocity crashes as well as rotational and low speed impacts. This technologically advanced helmet redefines helmet performance and safety expectations.

BUILT FROM THE INSIDE OUT

The Formula's Adaptive Impact System (AIS) is the result of years of collaborated research and design with industry leading doctors, scientists, and physicists from around the world. AIS is a high-performance ecosystem of structural design and energy mitigating materials. Each layer from Energy Cells, to the dual-density EPS liner, and the 12k carbon fiber shell, was carefully fine-tuned to achieve superior head protection from the widest possible range of real-world impacts.





ENERGY CELLS ENHANCED BY RHEON

Impact Energy Cells maximize absorption of low speed linear and rotational impacts. Their unique shape and maze-like structure allow them to compress and shear. This slight movement maximizes absorption of low speed linear and rotational impacts reducing overall brain stress.

These Energy Cells are made of RHEON, an "active" strain-rate sensitive material that efficiently absorbs and dissipates energy as it deforms. RHEON's adaptive chemistry reacts instinctively to control energy and change its behavior depending on the severity or direction of an impact.



CONEHEAD TECHNOLOGY

Like a crumple zone, Conehead technology absorbs and dissipates impact forces more effectively than traditional EPS helmet liners. Conehead technology produces more progressive energy absorption through a broader range of impact scenarios.

The Formula has six critical zones of Conehead EPS. Each zone has a uniquely fine-tuned combination of EPS densities for a more progressive response to impacts specific to that region of the helmet.



EXPANDED VOLUME EPS

Studies have shown that the majority of impacts occur on the forehead or side of the head. To help combat these impacts, the Formula development team incorporated lower density expanded volume EPS (thicker EPS) in these critical zones. This expanded volume EPS provides improved suspension for impacts.



12K CARBON FIBER SHELL

The Formula's first line of defense is an extremely strong and lightweight 12K carbon fiber shell. 12K carbon fiber refers to 12,000 carbon filaments per band. Carbon fiber is strongest when it is flat. Wider carbon fiber bands woven together produce a flatter result with less dips and rises inherent in a woven material. The reduction of these dips and rises creates less areas for resin to pool. Less resin equals less weight. The result is an extremely lightweight shell with superior penetration resistance to common 3K carbon fiber.



MEET THE DOCTORS, AND SCIENTISTS



DR. DANIEL PLANT *PhD MENG MA*

Dr. Plant is a mechanical and industrial design engineering expert and Entrepreneur Fellow of the Royal Academy of Engineering, London UK. He invented RHEON, the "active" strain-rate sensitive material revolutionizing the "impact energy control" space.



DON MORGAN *Physicist*

Don Morgan is the inventor of Conehead technology. Morgan has spent more than 20 years researching the effectiveness of motorcycle and bicycle helmets and developing the new shock absorbing foam liner for helmets.

FORMULA HELMET BENCHMARK DATA TESTING

Testing was conducted by two separate independent test labs: SATRA Technology and RHEON LABS

HELMET TESTING PROTOCOL

Testing the FLY Formula was primarily to confirm that this helmet would provide the highest level of performance and protection across a wide range of impact scenarios.

We identified the top 10 MX helmet brands in the world at the time of testing and tested their best helmet models. In total 60 helmets were tested between SATRA and RHEON LABS altogether comprising 150 individual impacts.

Three helmets of each model were sent to SATRA to be independently tested to ECE standards, for both crown and front-side impacts. 30 helmets were tested and recorded.

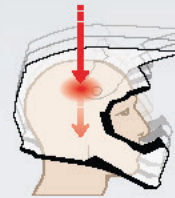
Three helmets of each model were tested on a bespoke test rig at RHEON LABS for a wide range of real-world impact scenarios, gathering a wide range of rotational and linear impact data. 30 helmets total were tested and recorded.

LINEAR IMPACT

A linear impact is any impact in the normal direction of the helmet. These often act through the center of gravity.

Most helmets have been designed to protect against high speed linear forces with the intention of preventing skull fracture. However, lower speed linear forces can also cause traumatic brain injury and therefore it is important to protect across the full range of linear forces.

Linear tests on the helmets were undertaken to ECE standards by SATRA, an independent test house.



30 helmets were tested for linear impacts at SATRA, totaling 60 individual impacts.

ROTATIONAL IMPACT

A rotational impact is any impact that strikes the head with any tangential component, these are often called oblique impacts or glancing blows.

Most falls in motocross include some rotational element. These impacts are strongly linked to mild traumatic brain injury (mTBI). However, these impacts are not accounted for by testing standards today.

All oblique testing was undertaken at RHEON LABS on their bespoke test rig according to advanced testing methods outlined in IRCOBI Conference 2016 paper.*



30 helmets were tested for rotational impacts at RHEON LABS, totaling 90 individual impacts.

*A New Helmet-liner Design for Improved Survivability, in IRCOBI Conference 2016 [online], Malaga, International Research Council on Biomechanics of Injury www.rheonlabs.com/resources

HELMET PERFORMANCE RANKING

	Formula	A	B	C	D	E	F	G	H	I
	1268g	1343g	1394g	1396g	1413g	1415g	1486g	1552g	1557g	1597g
Weight	1	2	3	4	5	6	7	8	9	10
Linear FSL	1	7	8	9	2	5	3	4	10	6
Linear BSR	2	4	8	6	5	3	1	10	9	7
Linear FSR	1	4	8	9	2	5	3	6	10	7
Rotational FSL	4	2	8	9	1	5	3	7	10	6
Rotational BSR	2	3	8	7	5	4	1	10	9	6
Rotational FSR	3	4	9	7	1	5	2	8	10	6
HIC FS	1	3	10	5	4	6	2	7	9	8
HIC C	3	6	10	4	5	2	1	7	9	8

Totals are the sum of the above test rankings. The lowest number represents the best overall performance.

Rank Totals	18	35	72	60	30	41	23	67	85	64
--------------------	-----------	-----------	-----------	-----------	-----------	-----------	-----------	-----------	-----------	-----------

CONCLUSIONS

Results show the Formula helmet is significantly reducing both the linear and rotational accelerations experienced by the headform during front oblique impacts.

A ranking system was developed to rank the 10 leading MX helmets tested. It takes into consideration all of the tests undertaken and outlined in this document – from tests for high and low speed linear accelerations, including HIC scores, as well as for high and low speed rotational accelerations.

The ranking also includes a factor of weight, as we believe reducing helmet mass is critical to our riders. The Carbon Formula is the lightest helmet in this range, beating all nine other leading MX helmets. These are the results based on this ranking.

Testing concluded the Formula is a very high performance helmet which can significantly reduce linear and rotational accelerations. The FLY Formula is also shown to outperform the competition in an overwhelming majority of cases tested.

INDEPENDENT 3rd PARTY TESTING BY SATRA TECHNOLOGY

SATRA TECHNOLOGY CENTRE, UK

SATRA is a leading independent testing house based in the UK. All external testing was completed in accordance with ECE 22.05 using a kerbstone anvil at 7.5 m/s.

ECE 22.05 is a high speed linear impact test for helmets devised to prevent skull fracture in high impact events.

Each of the 10 models of MX helmets were tested in both crown and front-side locations. These tests were then repeated on three separate helmets of the same models. Peak deceleration was noted and a Head Injury Criterion (HIC) score was given for each tested impact.

SATRA Impacts Test Locations



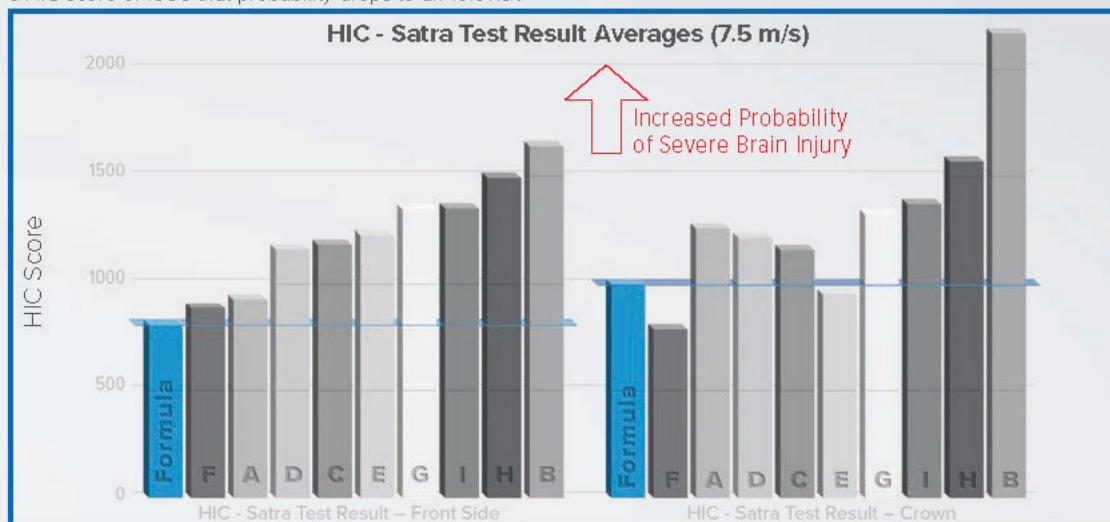
HEAD INJURY CRITERION

The Head Injury Criterion (HIC) equation measures the risk of head injury. For helmets this is calculated using acceleration data derived from standard ECE linear drop tests.

An impact with a HIC score of 3000 is representative of a 99% probability of severe brain injury. At an impact with a HIC score of 1000 that probability drops to an 18% risk

of severe brain injury and down to 5% at a score of 700.

Whilst these calculations are a useful indicator to measure the safety of a helmet, they should not be taken as universal scores. The possibility of sustaining a head injury from a crash is a highly variable event which is unique to the individual impact.



HELMET TESTING FOR REAL-WORLD SCENARIOS BY RHEON

RHEON LABS LONDON, UK



The RHEON LABS state-of-the-art helmet test rig simulates both linear and rotational violence from 'real-world' events. These tests consist of a slider with a 30-degree wedge impacting a highly-instrumented bio-fidelic head (Hybrid III), neck and representative body mass. The tunable drop rig mimics the inertia of the human body which allows accurate representation of a head impact to be replicated.

Each of the 10 models of MX helmet was tested firstly

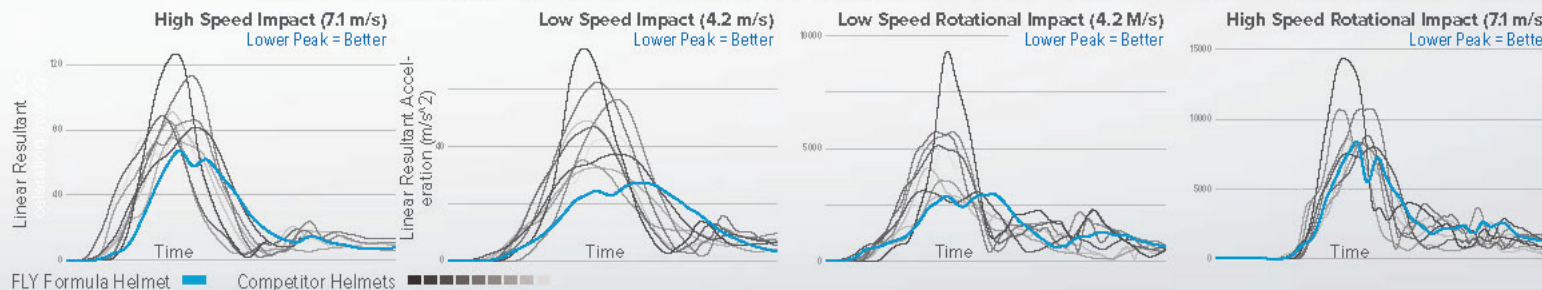
at front-side left (high speed 7.1m/s) followed by back-side right (high speed 7.1m/s) and lastly at front-side right (low speed 4.2m/s). The results for both linear and rotational acceleration data were recorded and the peak values noted for reference. These tests were then repeated on three separate helmets of the same models.

This testing method used the basis of the test method as described in IRCOB Conference 2016 paper.*

RESULTS

These graphs show the best traces of all models of helmets tested. The reduction in peak acceleration achieved by the FLY Formula can be seen at high and low impact speeds in the traces of these four graphs, demonstrating that the helmet is working over a wide dynamic range of impacts.

The FLY Formula Helmet Consistently Performed Amongst the Best for All Impacts Tests.





Expanded Volume EPS

Impact Energy Cells made of RHEON

True Functional Ventilation

Comfort liner

Quick release cheek pads

Rubber trim with integrated nose guard

EPP chin bar



Conehead® EPS technology

Lightweight visor screws

12K carbon fiber shell

Clavicle shell relief zone

FORMULA CARBON WITH RHEON

XS-2X

AVAILABLE IN YOUTH

STANDARD

- ECE / DOT approved

ADAPTIVE IMPACT SYSTEM (AIS)

- 12K carbon fiber shell produces an extremely lightweight shell with superior penetration resistance
- Impact Energy Cells made of RHEON, the Impact Energy Cells maximize absorption of low-speed linear and rotational impacts, reducing forces transmitted to the brain
- Conehead® EPS Technology provides a softer liner whereby the cones help manage or absorb an impact force more efficiently. Six critical zones have been fine tuned for a progressive response to low-speed and high-speed impacts.
- Expanded volume EPS means strategic areas of the helmet have more impact absorbing EPS, more suspension between your head and the ground

CONSTRUCTION

- Expanded Polypropylene (EPP) chin bar creates an additional element of impact mitigation, and is used in the chin bar for its superior damage resistance, and energy absorbing properties
- Clavicle shell relief zone creates a soft zone filled with EPS and EPP to aid in reducing clavicle injuries
- Custom molded rubber trim with integrated nose guard

WEIGHT

- 1290 grams +/-50g (size MD/LG), 2.8 pounds +/-0.11lb (size MD/LG)

COMFORT/LINER

- Comfort liner and quick release cheek pads are made of washable moisture-wicking, anti-microbial material

VENTILATION

- True Functional Ventilation (TFV)-When in motion, air is forced through multiple air intake vents, then passed through aligned vent channels in the EPS and exits out multiple rear exhaust vents

ACCESSORIES

- Included premium helmet garage
- Included extra visor
- Optional cold weather breath box:

YL-LG 73-47209

XL-2X 73-47210

- Optional cold weather helmet liners:

YL 73-47208YL

XS/SM 73-47208XS

MD/LG 73-47208M

XL/2X 73-47208X

FORMULA CARBON TRACER WITH RHEON

YL-2X AVAILABLE IN YOUTH

699€95

STANDARD

- ECE / DOT approved

ADAPTIVE IMPACT SYSTEM (AIS)

- 12K carbon fiber shell produces an extremely lightweight shell with superior penetration resistance
- Impact Energy Cells made of RHEON, the Impact Energy Cells maximize absorption of low-speed linear and rotational impacts, reducing forces transmitted to the brain
- Conehead® EPS Technology provides a softer liner whereby the cones help manage or absorb an impact force more efficiently. Six critical zones have been fine tuned for a progressive response to low-speed and high-speed impacts.
- Expanded volume EPS means strategic areas of the helmet have more impact absorbing EPS, more suspension between your head and the ground

CONSTRUCTION

- Expanded Polypropylene (EPP) chin bar creates an additional element of impact mitigation, and is used in the chin bar for its superior damage resistance, and energy absorbing properties
- Clavicle shell relief zone creates a soft zone filled with EPS and EPP to aid in reducing clavicle injuries
- Custom molded rubber trim with integrated nose guard

WEIGHT

- 1290 grams +/-50g (size MD/LG),
2.8 pounds +/-0.11lb (size MD/LG)

COMFORT/LINER

- Comfort liner and quick release cheek pads are made of washable moisture-wicking, anti-microbial material

VENTILATION

- True Functional Ventilation (TFV)- When in motion, air is forced through multiple air intake vents, then passed through aligned vent channels in the EPS and exits out multiple rear exhaust vents

ACCESSORIES

- Included premium helmet garage
- Included extra visor
- Optional cold weather breath box:

YL-LG 73-47209

XL-2X 73-47210

- Optional cold weather helmet liners:

YL 73-47208YL

XS/SM 73-47208XS

MD/LG 73-47208M

XL/2X 73-47208X



GOLD/BLACK
73-4441



BLUE/BLACK
73-4440



HI-VIS/BLACK
73-4442

FORMULA CARBON TRACER WITH RHEON

YL-2X AVAILABLE IN YOUTH



SILVER/BLACK
73-4444

FORMULA CARBON SOLID WITH RHEON

YL-2X AVAILABLE IN YOUTH



MATTE BLACK CARBON
73-4429



RED/BLACK
73-4443



WHITE NOT AVAILABLE IN YOUTH
73-4401



Expanded Volume EPS

Conehead® EPS technology

True Functional Ventilation

Comfort liner

Quick release cheek pads

Rubber trim with integrated nose guard

EPP chin bar

FORMULA CC WITH RHEON

AVAILABLE IN **YOUTH**

STANDARD

- ECE / DOT approved

ADAPTIVE IMPACT SYSTEM

- Tri-weave composite shell is comprised of carbon fiber, DuPont™ Kevlar® and fiberglass, producing a lightweight shell with superior penetration resistance
- Impact Energy Cells made of RHEON, the Impact Energy Cells maximize absorption of low speed linear and rotational impacts, reducing forces transmitted to the brain
- Conehead® Dual-density Expanded Polystyrene (EPS) Technology provides a softer liner whereby the cones help manage or absorb an impact force more efficiently. Six critical zones have been fine tuned for a progressive response to low speed and high-speed impacts
- Expanded volume EPS means strategic areas of the helmet have more impact absorbing EPS, more suspension between your head and the ground

CONSTRUCTION

- Expanded Polypropylene (EPP) chin bar creates an additional element of impact mitigation, and is used in the chin bar for its superior damage resistance, and energy absorbing properties
- Clavicle shell relief zone creates a soft zone filled with EPS and EPP to aid in reducing clavicle injuries
- Custom molded rubber trim with integrated nose guard
- Lightweight custom visor screws and stainless-steel D-rings

WEIGHT

- 1340 grams +/-50g (size MD/LG), 2.9 pounds +/-0.11lb (size MD/LG)

COMFORT/LINER

- Comfort liner and quick release cheek pads are made of washable moisture-wicking, anti-microbial material

VENTILATION

- True Functional Ventilation (TFV)-When in motion air is forced through multiple air intake vents, then passed through aligned vent channels in the EPS and exits out multiple rear exhaust vents

ACCESSORIES

- Included soft fleece helmet bag
- Optional cold weather breath box:

YL-LG 73-47209

XL-2X 73-47210

- Optional cold weather helmet liners:

YL 73-47208YL

XS/SM 73-47208XS

MD/LG 73-47208M

XL/2X 73-47208X



DuPont™ and Kevlar® are trademarks or registered trademarks of E.I. du Pont de Nemours and Company.

FORMULA CC TEKTONIC WITH RHEON

YL-2X AVAILABLE IN YOUTH

549€95

STANDARD

- ECE / DOT approved

ADAPTIVE IMPACT SYSTEM

- Tri-weave composite shell is comprised of carbon fiber, DuPont™ Kevlar® and fiberglass, producing a lightweight shell with superior penetration resistance
- Impact Energy Cells made of RHEON, the Impact Energy Cells maximize absorption of low speed linear and rotational impacts, reducing forces transmitted to the brain
- Conehead® Dual-density Expanded Polystyrene (EPS) Technology provides a softer liner whereby the cones help manage or absorb an impact force more efficiently. Six critical zones have been fine tuned for a progressive response to low speed and high-speed impacts
- Expanded volume EPS means strategic areas of the helmet have more impact absorbing EPS, more suspension between your head and the ground

CONSTRUCTION

- Expanded Polypropylene (EPP) chin bar creates an additional element of impact mitigation, and is used in the chin bar for its superior damage resistance, and energy absorbing properties
- Clavicle shell relief zone creates a soft zone filled with EPS and EPP to aid in reducing clavicle injuries
- Custom molded rubber trim with integrated nose guard
- Lightweight custom visor screws and stainless-steel D-rings

WEIGHT

- 1340 grams +/- 50g (size MD/LG), 2.9 pounds +/- 0.11lb (size MD/LG)

COMFORT/LINER

- Comfort liner and quick release cheek pads are made of washable moisture-wicking, anti-microbial material

VENTILATION

- True Functional Ventilation (TFV)-When in motion air is forced through multiple air intake vents, then passed through aligned vent channels in the EPS and exits out multiple rear exhaust vents

ACCESSORIES

- Included soft fleece helmet bag
- Optional cold weather breath guard:

YL-LG 73-47209

XL-2X 73-47210

- Optional cold weather helmet liners:

YL 73-47208YL

XS/SM 73-47208XS

MD/LG 73-47208M

XL/2X 73-47208X

DuPont™ and Kevlar® are trademarks or registered trademarks of E.I. du Pont de Nemours and Company.



BLACK/BLUE/RED
73-4330



BLACK/RED/ORANGE
73-4331

FORMULA CC TEKTONIC WITH RHEON

YL-2X AVAILABLE IN YOUTH



BLACK/SUNSET
73-4332

FORMULA CC SOLID WITH RHEON

YL-2X AVAILABLE IN YOUTH



MATTE BLACK
73-4300

FORMULA CC ROCKSTAR WITH RHEON

XS-2X



MATTE BLACK/SLATE/BLUE
73-4333



MATTE BLACK/GOLD
73-4328





FORMULA CC CENTRUM WITH RHEON

XS-2X \$499.95 AVAILABLE IN YOUTH

549€95



BLACK/BLUE/HI-VIS
73-4320



METALLIC BLUE/LIGHT GREY
73-4322



MATTE GREY/BLACK
73-4321



MATTE OLIVE GREEN/BLACK
73-4324

FORMULA CC CENTRUM WITH RHEON

XS-2X \$499.95 AVAILABLE IN YOUTH



METALLIC RED/WHITE
73-4323

**FORMULA CC SPECIAL EDITION
AVENGE** WITH RHEON

XS-2X \$499.95



BLACK/SUNSET
73-4325



Expanded Volume EPS

Multi-density EPS Technology

True Functional Ventilation

Comfort liner

Quick release cheek pads

Rubber trim with integrated nose guard

EPP chin bar

FORMULA CP WITH RHEON

AVAILABLE IN **YOUTH**

STANDARD

- ECE / DOT approved

ADAPTIVE IMPACT SYSTEM

- Polycarbonate alloy shell construction produces an extremely lightweight shell with excellent penetration resistance
- Impact Energy Cells made of RHEON, the Impact Energy Cells maximize absorption of low speed linear and rotational impacts, reducing forces transmitted to the brain
- Multi-density Expanded Polystyrene (EPS) Technology provides a softer EPS. Critical zones have been fine tuned for a progressive response to low speed and high-speed impacts
- Expanded volume EPS means strategic areas of the helmet have more impact absorbing EPS, more suspension between your head and the ground

CONSTRUCTION

- Expanded Polystyrene (EPS) chin bar creates an additional element of impact mitigation
- Clavicle shell relief zone creates a soft zone filled with EPS to aid in reducing clavicle injuries
- Custom molded rubber trim with integrated nose guard
- Lightweight custom visor screws and stainless-steel D-rings

WEIGHT

- 1450 Grams +/-50 (size MD/LG), 2.9 pounds +/-0.11 (size MD/LG)

COMFORT/LINER

- Comfort liner and quick release cheek pads are made of washable moisture-wicking, anti-microbial material

VENTILATION

- True Functional Ventilation (TFV)-When in motion air is forced through multiple air intake vents, then passed through aligned vent channels in the EPS and exits out multiple rear exhaust vents

ACCESSORIES

- Included soft fleece helmet bag



FORMULA CP KRYPTON WITH RHEON

YL-2X **AVAILABLE IN YOUTH**

279€95

STANDARD

- ECE / DOT approved

ADAPTIVE IMPACT SYSTEM

- Polycarbonate alloy shell construction produces an extremely lightweight shell with excellent penetration resistance
- Impact Energy Cells made of RHEON, the Impact Energy Cells maximize absorption of low speed linear and rotational impacts, reducing forces transmitted to the brain
- Multi-density Expanded Polystyrene (EPS) Technology provides a softer EPS. Critical zones have been fine tuned for a progressive response to low speed and high-speed impacts
- Expanded volume EPS means strategic areas of the helmet have more impact absorbing EPS, more suspension between your head and the ground

CONSTRUCTION

- Expanded Polystyrene (EPS) chin bar creates an additional element of impact mitigation
- Clavicle shell relief zone creates a soft zone filled with EPS to aid in reducing clavicle injuries
- Custom molded rubber trim with integrated nose guard
- Lightweight custom visor screws and stainless-steel D-rings

WEIGHT

- 1450 Grams +/-50 (size MD/LG), 2.9 pounds +/-0.11 (size MD/LG)

COMFORT/LINER

- Comfort liner and quick release cheek pads are made of washable moisture-wicking, anti-microbial material

VENTILATION

- True Functional Ventilation (TFV)-When in motion air is forced through multiple air intake vents, then passed through aligned vent channels in the EPS and exits out multiple rear exhaust vents

ACCESSORIES

- Included soft fleece helmet bag



MATTE GREY/BLACK
73-0035



RED/BLACK/BLUE
73-0036

FORMULA CP KRYPTON WITH RHEON

YL-2X AVAILABLE IN YOUTH



RED/WHITE/NAVY
73-0037



GREY/BLACK/ELECTRIC FADE
73-0038

FORMULA CP SOLID WITH RHEON

YL-2X AVAILABLE IN YOUTH

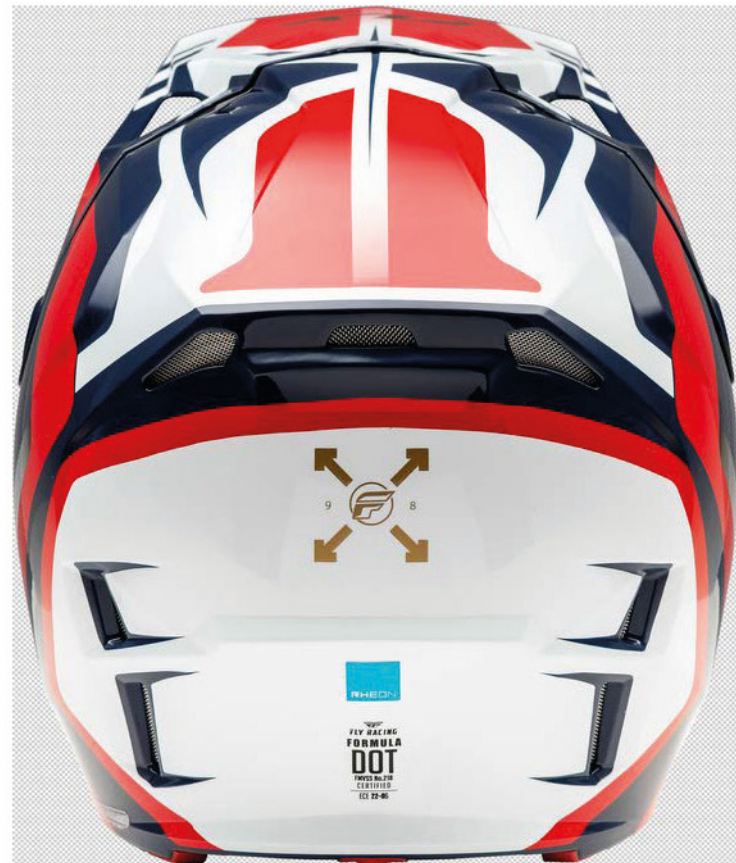


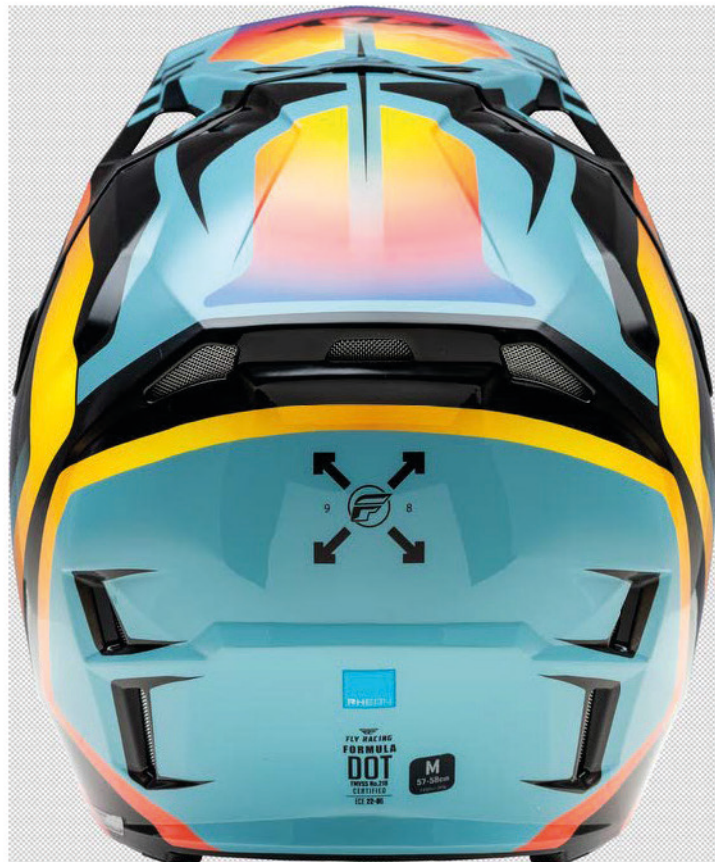
WHITE/BLACK/PURPLE
73-0039



MATTE BLACK
73-0025









FORMULA CP SLANT WITH RHEON

XS-2X \$259.95 AVAILABLE IN YOUTH

279€95



RED/BLACK/WHITE
73-0033



MATTE BLACK/GREY/HI-VIS
73-0030



BLACK/WHITE/GOLD
73-0031



GREY/BLUE
73-0032

FORMULA CP SOLID WITH RHEON

XS-2X \$259.95 **AVAILABLE IN YOUTH**



MATTE BLACK
73-0025

FORMULA CP SPECIAL EDITION RAVE WITH RHEON

XS-2X \$259.95 **AVAILABLE IN YOUTH**



BLACK/MINT/RED
73-0034



Dual-density
EPS liner

True functional
ventilation (TFV)

Removable and
washable comfort liner
and cheek pads

Rubber trim
with integrated
nose guard

High-flow
mouthpiece

DOT approved



Durable lightweight polymer shell

Stainless steel rivet

KINETIC

AVAILABLE IN **YOUTH**

STANDARD

- DOT approved
- ECE approved internationally

CONSTRUCTION

- Durable and lightweight polymer shell
- Dual-density EPS (Expanded Polystyrene) liner
- Custom-molded rubber trim with integrated nose guard
- Three shells and four EPS sizes provide a precise fit

WEIGHT

- 1342 grams +/-25g (size LG) 2.95 pounds +/- 0.06lb (size LG)

COMFORT/LINER

- Removable and washable comfort liner and cheek pads absorb sweat while providing ventilation

VENTILATION

- True Functional Ventilation (TFV)-When in motion air is forced through multiple air intake vents, then passed through aligned vent channels in the EPS and exits out multiple rear exhaust vents
- High-flow mouthpiece is replaceable

ACCESSORIES

- Included soft fleece helmet bag
- Optional cold weather kit with breath guard and ventilation plug kit: **73-88167**

KINETIC MENACE

YS-2X **AVAILABLE IN YOUTH**

139^{€95}

STANDARD

- ECE / DOT approved

CONSTRUCTION

- Durable and lightweight polymer shell
- Dual-density Expanded Polystyrene (EPS) liner
- Custom-molded rubber trim with integrated nose guard
- Three shells and four EPS sizes provide a precise fit

WEIGHT

- 1342 grams +/-25g (size LG), 2.95 pounds +/-0.06lb (size LG)

COMFORT/LINER

- Removable and washable comfort liner and cheek pads absorb sweat while providing ventilation

VENTILATION

- True Functional Ventilation (TFV)-When in motion air is forced through multiple air intake vents, then passed through aligned vent channels in the EPS and exits out multiple rear exhaust vents
- High-flow mouthpiece is replaceable

ACCESSORIES

- Included soft fleece helmet bag
- Optional cold weather kit with breath guard and ventilation plug kit: **73-88167**



BLACK/SUNRISE
73-8655



BLUE/WHITE
73-8656

KINETIC MENACE

YS-2X **AVAILABLE IN YOUTH**



RED/BLACK/YELLOW
73-8658



MATTE GREY/HI-VIS
73-8657









KINETIC SOLID

YS-2X AVAILABLE IN YOUTH

139€95



MATTE BLACK
73-3471

KINETIC ROCKSTAR

XS-2X

149€95



MATTE BLACK/GOLD
73-3311

KINETIC SPECIAL EDITION KRYPTEK

XS-2X



MATTE MOSS GREY/BLACK
73-8659



WHITE/BLUE
73-8654

KINETIC VISION

XS-2X \$139.95 AVAILABLE IN **YOUTH**



GREY/BLACK
73-8650



RED/GREY
73-8653



MATTE OLIVE GREEN/GREY
73-8652



HI-VIS/BLACK
73-8651



FLY RACING

FLY RACING



GOGGLES

The future is clear when seen through the lens of a FLY Racing goggle. Featuring the Zone Pro, Zone, and Focus models, every performance need is met for both youth and adult sizes. Multiple colors of frames, straps, with interchangeable lenses allow you to customize your look. Whether you're racing supercross against the world's best or just riding with your buddies, FLY Racing has the perfect goggle for every level.





BLACK/SILVER
SILVER MIRROR/SMOKE LENS
37-51905



WHITE/TEAL
BLUE/TEAL MIRROR/SKY BLUE LENS
37-51907

LEGACY



BLACK/GREY CAMO
DARK BLUE MIRROR/SMOKE LENS
37-51904



FUSCHIA/ELECTRIC BLUE/HI-VIS
MAGENTA/TEAL MIRROR/SMOKE LENS
37-51906

ZONE PRO ELITE GOGGLES

CONSTRUCTION

- Injection molded polycarbonate lens for increased optical clarity and reduced distortion
- Premium anti-scratch and anti-fog lens coatings
- Lightweight, durable polyurethane frame
- Engineered frame design increases field of view, maximizing peripheral vision

FEATURES

- Quick-change replacement lens with integrated tear-off posts
- Premium molded foam provides superior comfort, moisture management, and a tight seal against dirt and dust
- Strap outriggers provide optimal fit
- Optional accessories and lens colors available
- Removable FLY nose guard

FIT

- 45mm adjustable strap
- Non-slip silicone on inside of strap ensures a secure fit to your helmet

INCLUDED

- Nose guard
- Extra molded polycarbonate lens (clear) with premium anti scratch and anti-fog coatings and integrated tear-off posts
- Microfiber goggle bag

99€95

ZONE PRO GOGGLES

CONSTRUCTION

- Polycarbonate lens with premium anti-scratch and anti-fog lens coatings
- Lightweight, durable polyurethane frame
- Engineered frame design increases field of view, maximizing peripheral vision

FEATURES

- Quick-change replacement lens with integrated tear-off posts
- Premium molded foam provides superior comfort, moisture management, and a tight seal against dirt and dust
- Strap outriggers provide optimal fit
- Optional accessories and lens colors available
- Removable FLY nose guard

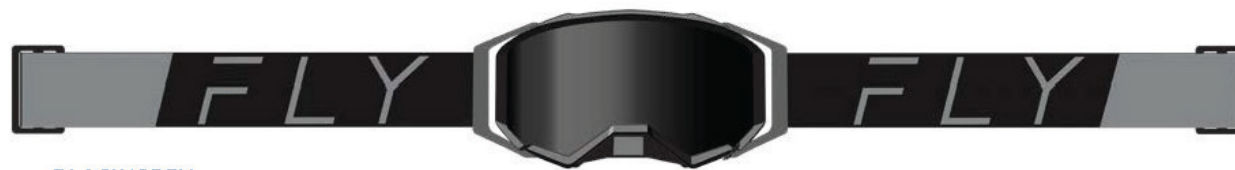
FIT

- 45mm adjustable strap
- Non-slip silicone on inside of strap ensures a secure fit to your helmet

INCLUDED

- Nose guard
- Extra polycarbonate lens (clear) with premium anti-scratch and anti-fog coatings and integrated tear-off posts
- Microfiber goggle bag

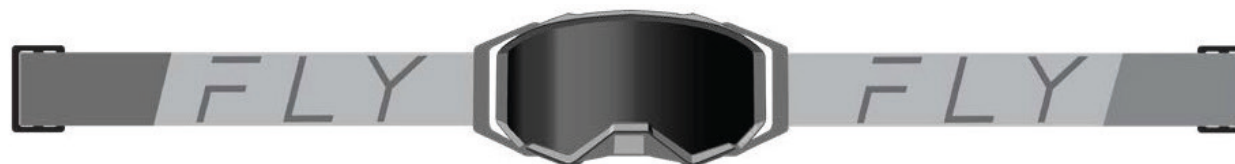
79€⁹⁵



BLACK/GREY
BLACK MIRROR/SMOKE LENS
37-51908



BLUE
SKY BLUE MIRROR/SKY BLUE LENS
37-51909



GREY
GREY MIRROR/SMOKE LENS
37-51910



RED
RED MIRROR/SMOKE LENS
37-51911

ZONE PRO GOGGLES



BLACK/HI-VIS
SILVER MIRROR/SMOKE LENS
37-51900



BLACK/WHITE
DARK SMOKE/SMOKE LENS
37-51902



BLACK/PINK
PINK MIRROR/SMOKE LENS
37-51901



WHITE/BLUE
SKY BLUE MIRROR/SMOKE LENS
37-51903



ZONE GOGGLES

AVAILABLE IN **YOUTH**

CONSTRUCTION

- Polycarbonate lens with premium anti-scratch & anti-fog coatings
- Lightweight yet durable polyurethane frame
- Engineered frame design increases field of view providing massive peripheral vision

FEATURES

- Quick change replacement lens with pre-installed tear-off posts
- Premium three-layer face foam provides excellent moisture management and a tight seal
- Optional accessories and lens colors available
- Adult versions compatible with FLY nose guards

FIT

- 40mm adjustable double buckle strap for easy goggle tension adjustment
- Non-slip silicone on inside of strap ensures a secure fit to your helmet
- Available in adult and youth sizes

INCLUDED

- Adult versions come with Microfiber goggle bag

59^{€95}



BLACK/GOLD
SILVER MIRROR/SMOKE LENS
37-51520
YOUTH 37-51520Y



NAVY/WHITE
RED MIRROR/SMOKE LENS
37-51521
YOUTH 37-51521Y



RED/CHARCOAL
SILVER MIRROR/SMOKE LENS
37-51522
YOUTH 37-51522Y



SILVER/BLUE
DARK BLUE MIRROR/SMOKE LENS
37-51523
YOUTH 37-51523Y

ZONE GOGGLES

AVAILABLE IN **YOUTH**



BLACK/RED
SILVER MIRROR/SMOKE LENS
37-51501
YOUTH 37-51721



BLUE
SKY BLUE MIRROR/SMOKE LENS
37-51502
YOUTH 37-51722



BLACK/HI-VIS
SILVER MIRROR/SMOKE LENS
37-51500
YOUTH 37-51720



PINK/WHITE
SKY BLUE MIRROR/SMOKE LENS
37-51504
YOUTH 37-51724



WHITE
DARK SMOKE/SMOKE LENS
37-51506
YOUTH 37-51726



HELMETS

GOGGLES

RACEWEAR

OFFROAD

BOOTS

PROTECTION

LUGGAGE

FOCUS GOGGLES

AVAILABLE IN **YOUTH**

CONSTRUCTION

- Polycarbonate lens with premium anti-scratch & anti-fog coatings
- Lightweight yet durable polyurethane frame
- Engineered frame design increases field of view providing massive peripheral vision

FEATURES

- Quick change replacement lens
- Two-layer face foam provides all day comfort and a tight seal
- Optional accessories and lens colors available
- Compatible with FLY nose guards

FIT

- 40mm adjustable double buckle strap for easy goggle tension adjustment
- Non-slip silicone on inside of strap ensures a secure fit to your helmet
- Available in adult and youth sizes

34€95



BLUE/WHITE
CLEAR LENS
37-51153
YOUTH 37-51153Y



BLACK/WHITE
CLEAR LENS
37-51152
YOUTH 37-51152Y



CHARCOAL/ORANGE
CLEAR LENS
37-51154
YOUTH 37-51154Y



RED/WHITE
CLEAR LENS
37-51156
YOUTH 37-51156Y



SILVER/CHARCOAL
CLEAR LENS
37-51157
YOUTH 37-51157Y

FOCUS GOGGLES

AVAILABLE IN **YOUTH**



BLACK/HI-VIS
CLEAR LENS
37-51150
YOUTH 37-51150Y



BLACK/PINK
CLEAR LENS
37-51151
YOUTH 37-51151Y



WHITE/BLACK
CLEAR LENS
37-51158
YOUTH 37-51158Y



KHAKI/BLACK
CLEAR LENS
37-51155
YOUTH 37-51155Y

SPECIAL EDITION KRYPTEK



MOSS GREY/BLACK
CLEAR LENS
37-51159
YOUTH 37-51159Y

FOCUS SAND GOGGLES

CONSTRUCTION

- Polycarbonate lens with premium anti-scratch & anti-fog coatings
- Lightweight yet durable polyurethane frame
- Engineered frame design increases field of view providing massive peripheral vision

FEATURES

- Quick change replacement lens with pre-installed tear-off posts
- Closed cell vent foam for preventing fine sand particles from entering the goggle eyeport
- Two-layer face foam provides all day comfort and a tight seal
- Optional accessories and lens colors available
- Compatible with FLY nose guards

FIT

- 40mm adjustable double buckle strap for easy goggle tension adjustment
- Non-slip silicone on inside of strap ensures a secure fit to your helmet
- Available in adult sizes



BLACK/WHITE
DARK SMOKE LENS
37-51147

39€95



KHAKI/BROWN
DARK SMOKE LENS
37-51148

FLY GOGGLE GARAGE

5.5"H X 10.5"W X 16"L

CONSTRUCTION

- Durable PVC backed polyester ripstop
- YKK® Zippers – industry standard, abrasion resistant zippers
- Molded carrying handle
- Crush resistant case

FEATURES

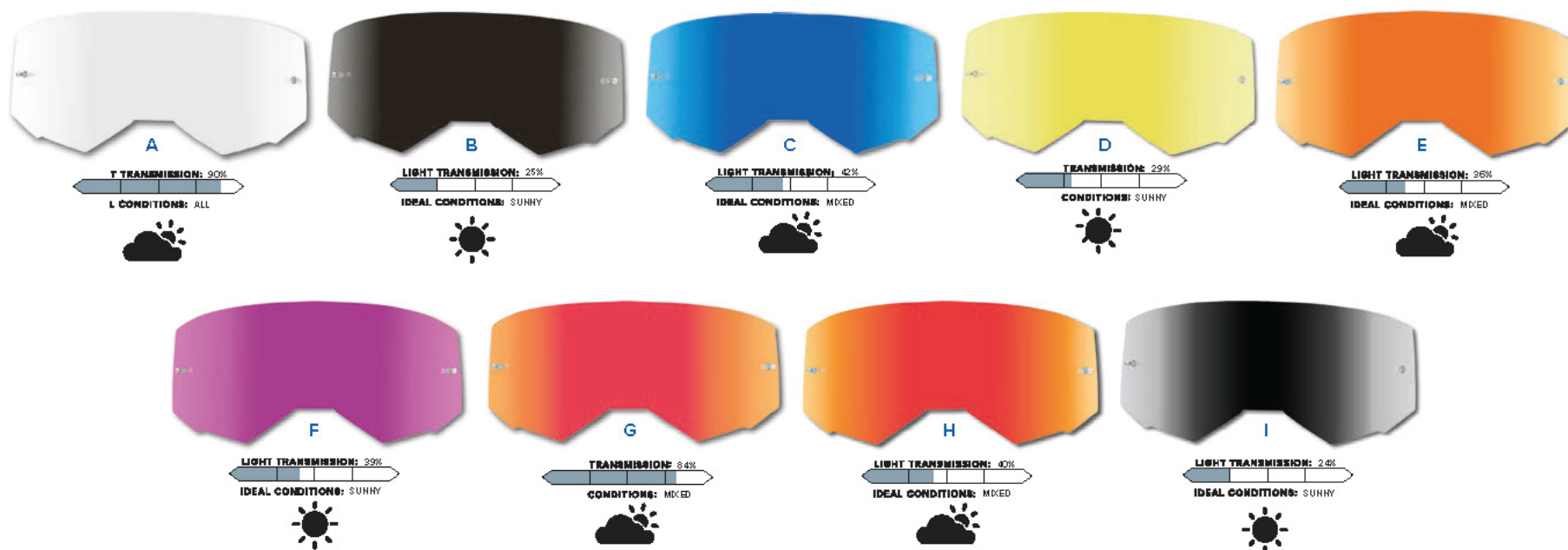
- Five goggle storage slots
- Five lens storage pockets
- Fully adjustable storage slots
- Pocket for accessories and lenses
- 180° adjustable lid
- Hang loop conveniently hangs case on wall hook while in use



BLACK
28-5224

59€95

ZONE PRO/ZONE/FOCUS REPLACEMENT LENSES



DESCRIPTION	LENS COLOR	ADULT	YOUTH
2019+ Replacement Lenses and Accessories			
FLY Single Lens w/o post	CLEAR		37-5480
FLY Single Lens w/o post	DARK SMOKE		37-5481
A FLY Single Lens w/post	CLEAR	37-5421	37-5490
B FLY Single Lens w/post	DARK SMOKE	37-5422	37-5491
C FLY Single Lens w/post	BLUE MIRROR/SMOKE	37-5427	37-5496
D FLY Single Lens w/post	GOLD MIRROR/SMOKE	37-5426	37-5495
E FLY Single Lens w/post	ORANGE MIRROR/SMOKE	37-5425	37-5494
F FLY Single Lens w/post	PINK MIRROR/SMOKE	37-5429	37-5498
G FLY Single Lens w/post	RED MIRROR/CLEAR	37-5428	37-5497
H FLY Single Lens w/post	RED MIRROR/SMOKE	37-5423	37-5492
I FLY Single Lens w/post	SILVER MIRROR/SMOKE		37-5499
J FLY Single Lens w/post	SKY BLUE MIRROR/SMOKE		37-5493
FLY 10/pk Tearoffs		37-5400	37-5479
FLY 20/pk Tearoffs		37-5401	
Laminate Tearoffs	3/PK	37-54020	
Laminate Tearoffs	7/PK	37-54030	
Laminate Tearoffs	7/PK PERIMETER SEAL	37-54040	
Roll-off System			
K FLY Roll-off System		37-5402	
FLY Roll-off Replacement Film	6/PK	37-5403	
FLY Roll-off Mud Flap		37-5404	
FLY MX Nose Guard	BLACK	37-5405	
FLY Snow Nose Guard	BLACK	37-5406	
FLY '19 Roll-Off Lens	CLEAR	37-5407	
FLY '19 Roll-Off Lens	SMOKE	37-5408	



ROLL-OFF SYSTEM

CONSTRUCTION

- Polycarbonate lens with premium anti-scratch and anti-fog coatings
- Engineered lens surface keeps film advancing freely

FEATURES

- 45mm film width for increased field of view
- Transparent canister provides easy view of remaining film supply

FIT

- Compatible with FLY Focus, Zone and Zone Pro goggles

INCLUDED

- 1 mud flap visor
- 2 rolls of film
- 2 canisters
- 1 Polycarbonate clear lens with premium anti-scratch and anti-fog coatings

EVOLUTION DST RACEWEAR BOA®

MAILLOT

69€95

PANTALON

209€95

GANTS

42€95

JERSEY

PERFORMANCE

- Laser-cut perforations for advanced ventilation
- Full mesh back and integrated mesh in key areas
- Zero-cuff arm openings provide unrestrictive mobility
- Multi-directional Lycra® neck and shoulder panels

CONSTRUCTION

- Low profile multi-panel construction for maximum performance and a comfortable fit
- Seamless armpit construction, with a single-continuous stretch mesh panel from the sides to cuffs which helps prevent underarm irritation
- Silicone-printed tail keeps jersey tucked in

FIT

- Pro fit: ergonomic arms created for riding position, with a slim cut



BLACK/RED

Jersey **377-120** SM-2X
 Pant **377-130** 28-38
 Glove **377-110** YL-3X



ICE GREY/CHARCOAL/NEON GREEN

Jersey **377-121** SM-2X
 Pant **377-131** 28-38
 Glove **377-111** YL-3X



NAVY/WHITE

Jersey **377-122** SM-2X
 Pant **377-132** 28-38
 Glove **377-112** YL-3X

PANTS

PERFORMANCE

- DST (Durable Stretch Technology) constructed of four-way HEX-Stretch fabric provides excellent mobility with heavy-duty durability
- Strategically placed stretch-mesh ventilation and laser-cut perforations in key areas for advanced airflow

CONSTRUCTION

- Leather heat shield panels fastened with high-tension, heat resistant Aramid stitching
- Seat panel sewn to breathable light mesh reduces pulling
- Advanced Lycra® liner adds increased comfort and performance

FIT

- The BOA® Fit System offers fast, on-the-fly micro adjustability
- Ergonomically pre-shaped knee accommodates most guards
- Full-Floating durable 900D seat surrounded by HEX-Stretch material moves naturally with your body

• Zipper lock system keeps pants closed and secure

SPECIAL EDITION
STROBE



WHITE/HI-VIS
 Jersey **377-123** SM-2X
 Pant **377-133** 28-38
 Glove **377-113** YL-3X



BLACK/ELECTRIC BLUE
 Jersey **377-124** SM-2X
 Pant **377-134** 28-38
 Glove **377-114** YL-3X

LIMITED EDITION
PODIUM



RED/WHITE/RED IRIDIUM
 Jersey **377-125** SM-2X
 Pant **377-135** 28-38
 Glove **377-115** YL-3X

LITE RACEWEAR BOA®

AVAILABLE IN YOUTH

MAILLOT

69€95

PANTALON

209€95

GANTS

42€95

JERSEY

PERFORMANCE

- Laser-cut perforations for advanced ventilation
- Zero-cuffs provide unrestrictive mobility and a comfortable fit

CONSTRUCTION

- Mesh ventilation panels dissipate unwanted heat
- Multi-panel construction for maximum performance and comfortable fit
- Low profile streamlined taped collar
- Extended tail helps keep jersey tucked in

FIT

- Athletic fit: fits close to the body with minimal excess

PANT

PERFORMANCE

- Lightweight minimalist design
- Mesh panels on back of knees, hips and lower legs
- Low-profile stretch leg cuffs with removable elastic band

CONSTRUCTION

- Four-way stretch panel construction for maximum comfort and movement
- Leather heat shield panels fastened with high-tension, heat resistant Aramid stitching

FIT

- The BOA® Fit System offers fast, on-the-fly micro adjustability
- Full-floating seat surrounded by stretch material moves naturally with your body
- Ergonomically pre-shaped knee accommodates most guards



BLACK/WHITE/DENIM GREY

Jersey **377-720** YXL-2X
Pant **377-730** 26-38
Glove **377-710** YS-3X



CHARCOAL/BLACK

Jersey **377-721** YXL-2X
Pant **377-731** 26-38
Glove **377-711** YS-3X

SPECIAL EDITION
LEGACY



RED/WHITE/BLACK
 Jersey **377-722** YXL-2X
 Pant **377-732** 26-38
 Glove **377-712** YS-3X



RED/WHITE/NAVY
 Jersey **377-723** YXL-2X
 Pant **377-733** 26-38
 Glove **377-713** YS-3X



LIGHT GREY/BLACK
 Jersey **377-724** YXL-2X
 Pant **377-734** 26-38
 Glove **377-714** YS-3X

WOMEN'S LITE RACEWEAR

MAILLOT

49€95

PANTALON

169€95

GANTS

22€95

JERSEY

PERFORMANCE

- Short and relaxed cuffs provide unrestrictive mobility

CONSTRUCTION

- Mesh ventilation panels dissipate unwanted heat
- Multi-panel construction for maximum performance and comfortable fit
- Low profile streamlined taped collar
- Extended tail helps keep jersey tucked in

FIT

- Women's Athletic fit: anatomically correct women's specific fit

PANT

PERFORMANCE

- Lightweight minimalist design
- Comfort mesh liner for comfort and ventilation
- Low profile stretch leg cuffs with removable elastic band

CONSTRUCTION

- Four-way stretch panel construction for maximum comfort and movement
- Leather heat shield panels fastened with high-tension, heat resistant Aramid stitching

FIT

- Full-floating seat surrounded by stretch material moves naturally with your body
- Ergonomically pre-shaped knee accommodates most knee braces and guards
- Sleek adjustable waist belt for a custom balanced fit
- Women's Athletic Fit: anatomically correct women's specific fit



BLACK/LIGHT GREY

Jersey **377-620** SM-2X
 Pant **377-630** 0/02-11/12
 Glove **377-610** YL-2X



DEEP PURPLE/WHITE/NEON CORAL

Jersey **377-621** SM-2X
 Pant **377-631** 0/02-11/12
 Glove **377-611** YL-2X



NAVY/IVORY

Jersey **377-622** SM-2X
 Pant **377-632** 0/02-11/12
 Glove **377-612** YL-2X

MAILLOT**42€95****PANTALON****159€95****GANTS****34€95****BRIGHT BLUE/CHARCOAL/WHITE**Jersey **377-420** YS-2XPant **377-430** 18-42Glove **377-410** YS-3X**ICE GREY/CHARCOAL/HI-VIS**Jersey **377-421** YS-2XPant **377-431** 18-42Glove **377-411** YS-3X**KINETIC PRIX BOA®
RACEWEAR**

AVAILABLE IN YOUTH

JERSEY**PERFORMANCE**

- Tagless comfort-stretch collar with gusset
- Relaxed shorty elastic sleeve cuffs

CONSTRUCTION

- Multi-panel construction for maximum performance and comfortable fit
- Mesh ventilation helps dissipate heat at your sides and underarms
- Extended tail helps keep jersey tucked in

FIT

- Standard fit: not too tight, not too loose

PANT**PERFORMANCE**

- Comfort mesh liner helps with comfort and ventilation
- Multi-directional stretch rip-stop panels for flexibility
- Internal pocket inside the waistband

CONSTRUCTION

- Ultra-durable multi-panel 900D construction with laser-cut perforations for advanced ventilation
- Leather heat shield panels fastened with high-tension, heat resistant Aramid stitching
- Soft-flex protective rubber badging creates massive vents for airflow

FIT

- The BOA® Fit System offers fast, on-the-fly micro adjustability
- Ergonomically pre-shaped knee works with most guards
- Full-floating seat surrounded by stretch rip-stop material moves with your body
- Ratcheting closure with zipper lock system keeps pants closed and secure

KINETIC PRIX RACEWEAR BOA®

MAILLOT

42€95

PANTALON

159€95

GANTS

34€95



RED/GREY/WHITE
Jersey **377-422** YS-2X
Pant **377-432** 18-42
Glove **377-412** YS-3X



NOT AVAILABLE IN YOUTH

WHITE/BLACK/HI-VIS
Jersey **377-423** SM-2X
Pant **377-433** 28-42
Glove **377-413** XS-3X



CHARCOAL/BLACK/BLUE IRIDIUM
 Jersey **377-520** SM-2X
 Pant **377-530** 28-42
 Glove **377-510** YS-3X



KHAKI/BLACK/HI-VIS
 Jersey **377-522** SM-2X
 Pant **377-532** 28-42
 Glove **377-512** YS-3X



DEEP PURPLE/WHITE/HI-VIS
 Jersey **377-521** SM-2X
 Pant **377-531** 28-42
 Glove **377-511** YS-3X



IVORY/NAVY/COBALT
 Jersey **377-523** SM-2X
 Pant **377-533** 28-42
 Glove **377-513** YS-3X

YOUTH KINETIC BOA® PRODIGY

DESIGNED FOR YOUTH

JERSEY

PERFORMANCE

- Tagless comfort-stretch collar with gusset
- Relaxed shorty elastic sleeve cuffs

CONSTRUCTION

- Multi-panel construction for maximum performance and comfortable fit
- Mesh ventilation helps dissipate heat at your sides and underarms
- Extended tail helps keep jersey tucked in

FIT

- Standard fit: not too tight, not too loose

PANT

PERFORMANCE

- Comfort mesh liner helps with comfort and ventilation
- Multi-directional stretch rip-stop panels for flexibility
- Internal pocket inside the waistband

CONSTRUCTION

- Ultra-durable multi-panel 900D construction with laser-cut perforations for advanced ventilation
- Leather heat shield panels fastened with high-tension, heat resistant Aramid stitching
- Soft-flex protective rubber badging creates massive vents for airflow

FIT

- The BOA® Fit System offers fast, on-the-fly micro adjustability
- Ergonomically pre-shaped knee works with most guards
- Full-floating seat surrounded by stretch rip-stop material moves with your body
- Ratcheting closure with zipper lock system keeps pants closed and secure



BLACK/LIGHT GREY
 Jersey **377-525** YS-YXL
 Pant **377-535** 18-26
 Glove **377-515** YS-YL



CHARCOAL/NEON GREEN/TRUE BLUE
 Jersey **377-526** YS-YXL
 Pant **377-536** 18-26
 Glove **377-516** YS-YL



FUSCHIA/ELECTRIC BLUE/HI-VIS
 Jersey **377-527** YS-YXL
 Pant **377-537** 18-26
 Glove **377-517** YS-YL

MAILLOT
42€95

PANTALON
159€95

GANTS
34€95

MAILLOT**32€95****PANTALON****109€95****GANTS****29€95****ARCTIC GREY/STONE**

Jersey **377-920** SM-2X
 Pant **377-930** 28-42
 Glove **377-910** Y3XS-3X

**BLACK/CHARCOAL**

Jersey **377-921** SM-5X
 Pant **377-931** 28-48
 Glove **377-911** Y3XS-3X

**NAVY/HI-VIS/WHITE**

Jersey **377-922** SM-5X
 Pant **377-932** 28-48
 Glove **377-912** Y3XS-3X

F-16 RIDING GEAR**JERSEY****PERFORMANCE**

- Tag-less comfort-stretch collar
- Relaxed shorty elastic sleeve cuffs

CONSTRUCTION

- Lightweight, durable polyester construction for maximum performance and comfortable fit
- Extended tail helps keep jersey tucked in

FIT

- Standard fit: not too tight, not too loose

PANTS**PERFORMANCE**

- Mesh comfort liner keeps you cool and comfortable
- Multi-directional stretch ribbing for flexibility
- Low profile stretch leg cuffs

CONSTRUCTION

- 600D polyester for strength and outstanding durability
- YKK® main zipper for maximum durability
- Soft-flex protective rubber details creates vents for airflow

FIT

- Ergonomically pre-shaped knee accommodates most guards
- Ratcheting closure and waist belt allow for adjustability
- Standard fit: not too tight, not too loose

F-16 RIDING GEAR

MAILLOT

32€95

PANTALON

109€95

GANTS

29€95

SPECIAL EDITION
KRYPTÉK



RED/CHARCOAL/WHITE

Jersey **377-923** SM-2X
Pant **377-933** 28-42
Glove **377-913** Y3XS-3X



TRUE BLUE/WHITE

Jersey **377-924** SM-2X
Pant **377-934** 28-42
Glove **377-914** Y3XS-3X



MOSS GREY/BLACK

Jersey **377-925** SM-5X
Pant **377-935** 28-48
Glove **377-915** XS-3X

MAILLOT**32€95****PANTALON****109€95****GANTS****29€95****ARCTIC GREY/BLUE**

Jersey **377-820** SM-2X
 Pant **377-830** 0/02-15/16
 Glove **377-810** XS-2X

**BLACK/LAVENDER**

Jersey **377-821** SM-2X
 Pant **377-831** 0/02-15/16
 Glove **377-811** XS-2X

**BLACK/WHITE**

Jersey **377-822** SM-2X
 Pant **377-832** 0/02-15/16
 Glove **377-812** XS-2X

WOMEN'S F-16 RIDING GEAR**JERSEY****PERFORMANCE**

- Tag-less comfort-stretch collar
- Relaxed shorty elastic sleeve cuffs

CONSTRUCTION

- Lightweight, durable polyester construction for maximum performance and comfortable fit
- Extended tail helps keep jersey tucked in

FIT

- Women's Athletic Fit: anatomically correct women's specific fit

PANTS**PERFORMANCE**

- Mesh comfort liner keeps you cool and comfortable
- Multi-directional stretch ribbing for flexibility
- Low profile stretch leg cuffs

CONSTRUCTION

- 600D polyester for strength and outstanding durability
- YKK® main zipper for maximum durability
- Soft-flex protective rubber details creates vents for airflow

FIT

- Ergonomically pre-shaped knee accommodates most guards
- Ratcheting closure and waist belt allow for adjustability
- Women's Athletic Fit: anatomically correct women's specific fit

YOUTH F-16 RIDING GEAR

DESIGNED FOR YOUTH

MAILLOT

29€95

PANTALON

99€95

GANTS

29€95



GREY/CHARCOAL/PINK
Jersey **377-220** YS-YXL
Pant **377-230** 18-26
Glove **377-210** Y3XS-YL



BLACK/YELLOW/ORANGE
Jersey **377-221** YS-YXL
Pant **377-231** 18-26
Glove **377-211** Y3XS-YL



RED/BLACK/GREY
Jersey **377-222** YS-YXL
Pant **377-232** 18-26
Glove **377-212** Y3XS-YL

YOUTH F-16 RIDING GEAR

DESIGNED FOR YOUTH

HELMETS

GOGGLES

RACEWEAR

OFFROAD

BOOTS

PROTECTION

LUGGAGE



TRUE BLUE/WHITE

Jersey **377-223** YS-YXL
Pant **377-233** 18-26
Glove **377-213** Y3XS-YL



BLACK/NEON GREEN/LIGHT GREY

Jersey **377-224** YS-YXL
Pant **377-234** 18-26
Glove **377-214** Y3XS-YL

UNIVERSAL JERSEY

BLACK/WHITE SM-5X
WHITE/BLACK SM-2X

PERFORMANCE

- Clean style can be paired with any pants
- Short and relaxed elastic cuffs

CONSTRUCTION

- Lightweight, durable polyester construction
- Tagless collar for added comfort
- Sublimated long-lasting graphics

FIT

- Standard fit: not too tight, not too loose

29€95



BLACK/WHITE
374-991 SM-5X



WHITE/BLACK
374-995 SM-2X



ORANGE/BLACK
370-8017



GREY/HI-VIS
370-8018

MESH HEAT EXHAUST BACK



WINDPROOF FRONT



BLACK/GREY
370-8010

WINDPROOF JERSEY

SM-2X

PERFORMANCE

- Ideal for cold weather action sports
- Maximum wind protection with a lightweight feel
- Anatomically correct women's specific fit

CONSTRUCTION

- Windproof front and arm panels
- Breathable back and armpit panels
- Tagless printed comfort stretch collar

FIT

- Standard fit: not too tight, not too loose

79€95

HELMETS

GOGGLES

RACEWEAR

OFFROAD

BOOTS

PROTECTION

LUGGAGE

EVO DST GLOVES

YL(6)-3X(13) **AVAILABLE IN YOUTH**

PERFORMANCE

- Premium protective race glove

CONSTRUCTION

- Four-way stretch and Lycra® materials for increased mobility
- Touch screen compatible double-layer Clarino® palm, perforated for improved airflow
- Adjustable Clarino® leather wrist closure for a secure fit
- Flexible direct-inject knuckle provides lightweight protection
- Soft-flex KPU adds protection and a clean look. KPU provides stronger logo adhesion and higher wear tolerance
- Split knuckles with ventilated gussets

42€95



BLACK/RED
377-110



CHARCOAL/NEON GREEN
377-111



WHITE/NAVY
377-112



HI-VIS/BLACK
377-113

SPECIAL EDITION STROBE



BLACK/ELECTRIC BLUE
377-114

LIMITED EDITION PODIUM



RED/WHITE/RED IRIDIUM
377-115

EVO DST GLOVES

HELMETS

GOGGLES

RACEWEAR

OFFROAD

BOOTS

PROTECTION

LUGGAGE

PRO LITE GLOVES

YL(6)-3X(13) **AVAILABLE IN YOUTH**

PERFORMANCE

- Ultra-lightweight minimalist race glove with a soft hand feel

CONSTRUCTION

- Touch screen compatible single-layer Clarino® palm, perforated for improved airflow and a lightweight feel
- Woven four-way stretch finger sidewall provide flexibility, comfort and airflow
- Adjustable synthetic leather wrist closure for a more secure fit
- Reinforced double layer thumb
- Silicone finger grippers

29€95



BLUE/WHITE
377-041



BLACK/WHITE
377-040



CHARCOAL/HI-VIS
377-042

PRO LITE GLOVES



KHAKI/BLACK
377-043



RED/WHITE
377-044



WHITE/BLACK
377-045

HELMETS

GOGGLES

RACEWEAR

OFFROAD

BOOTS

PROTECTION

LUGGAGE

LITE GLOVES

YS (4)-3X (13) **AVAILABLE IN YOUTH**

PERFORMANCE

- Ultra-lightweight minimalist race glove with a soft hand feel

CONSTRUCTION

- Touch screen compatible single-layer Clarino® palm, perforated for improved air flow and a lightweight feel
- Spandex mesh finger sidewall and gusset for improved air flow and lightweight feel
- Reinforced double layer thumb
- Silicone finger grippers

22€95



BLACK/WHITE/RED
377-710



CHARCOAL/BLACK
377-711

SPECIAL EDITION LEGACY



RED/BLACK
377-712



BLUE/WHITE
377-713



LIGHT GREY/BLACK
377-714

MALIBU



PINK/BLUE/SAND
377-740

UNCAGED



BLACK/WHITE/NEON PINK
377-741

LITE GLOVES

UNCAGED



BLACK/WHITE/NEON GREEN
377-742

WARPED



BLACK/PINK/ELECTRIC BLUE
377-743

WARPED



BLACK/WHITE
377-744

WOMEN'S LITE GLOVES

YL(6)-2X(12) **AVAILABLE IN YOUTH**

PERFORMANCE

- Ultra-lightweight minimalist race glove with a soft hand feel

CONSTRUCTION

- Touch screen compatible single-layer Clarino® palm, perforated for improved airflow and a lightweight feel
- Woven four-way stretch finger sidewall provide flexibility, comfort and airflow
- Adjustable synthetic leather wrist closure for a more secure fit
- Reinforced double layer thumb
- Silicone finger grippers

22€95



BLACK/LIGHT GREY
377-610



NEON CORAL/DEEP PURPLE
377-611



NAVY/IVORY
377-612

KINETIC PRIX GLOVES

YS(4)-3X(13) **AVAILABLE IN YOUTH**
 WHITE/BLACK/HI-VIS SM(7)-3X(13)

PERFORMANCE

- Lightweight protective race glove

CONSTRUCTION

- Four-way stretch finger sidewall for flexibility, comfort, and airflow
- Soft-flex logos provide protection and a clean look
- Reinforced double layer palm and thumb
- Split knuckles with ventilated gusset
- Adjustable wrist closure for a secure fit
- Silicone finger grippers

34€95



BRIGHT BLUE/CHARCOAL
377-410



CHARCOAL/HI-VIS
377-411



RED/GREY/WHITE
377-412



WHITE/BLACK/HI-VIS
377-413

KINETIC RELOAD GLOVES

YS(4)-3X(13) **AVAILABLE IN YOUTH**

PERFORMANCE

- Lightweight protective race glove

CONSTRUCTION

- Four-way stretch finger sidewall for flexibility, comfort, and airflow
- Soft-flex logos provide protection and a clean look
- Reinforced double layer palm and thumb
- Split knuckles with ventilated gusset
- Adjustable wrist closure for a secure fit
- Silicone finger grippers

34€95



CHARCOAL/BLACK/BLUE IRIDIUM
377-510



DEEP PURPLE/WHITE/HI-VIS
377-511



KHAKI/BLACK/HI-VIS
377-512



IVORY/NAVY/COBALT
377-513



BLACK/LIGHT GREY
377-515



CHARCOAL/NEON GREEN/TRUE BLUE
377-516



FUSCHIA/ELECTRIC BLUE/HI-VIS
377-517

YOUTH KINETIC PRODIGY GLOVES

YS(4)-YL(6) **DESIGNED FOR YOUTH**

PERFORMANCE

- Lightweight protective race glove

CONSTRUCTION

- Four-way stretch finger sidewall for flexibility, comfort, and airflow
- Soft-flex logos provide protection and a clean look
- Reinforced double layer palm and thumb
- Split knuckles with ventilated gusset
- Adjustable wrist closure for a secure fit
- Silicone finger grippers

34€95

F-16 GLOVES

Y3XS(1)-3X(13) **AVAILABLE IN YOUTH**

PERFORMANCE

- All-around performance riding glove

CONSTRUCTION

- Four-way stretch perforated neoprene cuff provides support, comfort and airflow
- Soft-flex logos provide protection and a clean look
- Durable lightly padded palm with reinforced thumb
- Adjustable wrist closure for a secure fit
- Silicone finger grippers

29€95



STONE/BLACK
377-910



BLACK/CHARCOAL
377-911



NAVY/HI-VIS/WHITE
377-912

F-16 GLOVES

HELMETS

GOGGLES

RACEWEAR

OFFROAD

BOOTS

PROTECTION

LUGGAGE



RED/CHARCOAL/WHITE
377-913



TRUE BLUE/WHITE
377-914

SPECIAL EDITION KRYPTEK



MOSS GREY/BLACK
377-915

WOMEN'S F-16 GLOVES

XS(7)-2X(12)

PERFORMANCE

- All-around performance riding glove

CONSTRUCTION

- Four-way stretch perforated neoprene cuff provides support, comfort and airflow
- Soft-flex logos provide protection and a clean look
- Durable lightly padded palm with reinforced thumb
- Adjustable wrist closure for a secure fit
- Silicone finger grippers

29€95



ARCTIC GREY/BLUE
377-810



BLACK/LAVENDER
377-811



BLACK/WHITE
377-812



GREY/PINK/PURPLE
377-210



BLACK/YELLOW/ORANGE
377-211

YOUTH F-16 GLOVES

Y3XS(1)-YL(6) **DESIGNED FOR YOUTH**

29€95



RED/BLACK
377-212



TRUE BLUE/WHITE
377-213



BLACK/NEON GREEN
377-214

WINDPROOF GLOVES

YL(6)-3X(13) **AVAILABLE IN YOUTH**

PERFORMANCE

- Lightweight windproof glove ideal for high intensity action sports in cooler weather

CONSTRUCTION

- Lightweight windproof fabric on the back of hands, fingers and fourchettes
- Silicon on fingers and palm for increased grip
- Single layer perforated synthetic leather palms for heat exhaust and lightweight feel
- Reinforced double layer thumb
- Soft-flex silicone logos

39€95



BLACK/RED
371-143



BLACK
371-141



BLACK/HI-VIS
371-142



BLACK
372-680



ORANGE/BLACK
372-687

49€95

PATROL XC GLOVES

XS(7)-3X(13)

PERFORMANCE

- Protective off-road riding glove

CONSTRUCTION

- Touch screen compatible single-layer Clarino® palm, perforated for improved airflow and a lightweight feel
- Impact resistant, hard-knuckle construction with an additional mid-layer of impact foam for increased protection
- Adjustable TPR wrist closure system with hook and loop backing ensures proper fit
- Four-way stretch finger sidewall for flexibility, comfort and airflow
- Reinforced double layer palm and thumb
- Embossed neoprene cuff
- Direct inject, flexible TPR finger protection



BLACK
370-670



GREY
373-680

39€95

PATROL XC LITE GLOVES

XS(7)-3X(13)

PERFORMANCE

- Lightweight off-road race glove

CONSTRUCTION

- Touch screen compatible single-layer Clarino® palm, perforated for improved airflow and a lightweight feel
- Four-way stretch finger sidewall for flexibility, comfort, and airflow
- Single layer perforated synthetic leather palms for improved airflow and lightweight feel
- Flexible direct-inject knuckles and fingers provide lightweight protection
- Adjustable synthetic leather wrist closure for a more secure fit
- Embossed ultra-light neoprene cuff for a secure fit
- Reinforced layer thumb
- Silicone finger grippers

PATROL JERSEY

SM-3X
BLACK/WHITE SM-5X

PERFORMANCE

- Durable mesh paneling for increased ventilation
- Short relaxed cuffs
- Reflective detail prints on the front and rear of the jersey

CONSTRUCTION

- Multi-panel construction for maximum performance and comfortable fit
- Comfort-stretch tagless collar made with Lycra® and stretch-rib materials
- Extended tail helps keep jersey tucked in

FIT

- Standard fit: not too slim, not too loose

42€95



BLACK/WHITE
376-650



CARAMEL/BLACK
376-651



SLATE BLUE/BLACK
376-652



BLACK/WHITE
376-660



CARAMEL/BLACK
376-661



SLATE BLUE/BLACK
376-662

149€95

OVER-BOOT STYLE



BLACK/WHITE
376-640



CARAMEL/BLACK
376-641



SLATE BLUE/BLACK
376-642

169€95

PATROL PANTS

30-42
BLACK/WHITE OVER-BOOT 30-48

PERFORMANCE

- Ventilated comfort mesh liner for added airflow
- Large zippered vents located on the front and back of the upper legs
- Two easily accessible zippered pockets
- Reflective prints for increased visibility
- Internal pocket located inside the waistband
- Silicone print around the internal waistband helps hold the pants up and stop them from slipping down

CONSTRUCTION

- Ultra-durable multi-panel 900d polyester construction
- Strategically placed stretch-rib panels
- Full leather, inner lower leg panel giving added durability

FIT

- Full-floating seat surrounded by stretch-rib material is designed to move with you
- Ratcheting closure allows for adjustability at the waistband
- Three piece ergonomically pre-shaped knee accommodates most knee braces and guards

OVER-BOOT PANT ONLY

- Over-boot style provides comfortable fit
- One easily accessible large zipper down the side of each leg allows you to open up the pant and fit it over your boots
- Heavy duty accordion stretch panels at the calf allow the pant to fit nicely over boots without being too baggy
- Hook and loop fastener tabs at the lower leg cuff easily allow you to adjust the cuff to fit around your boot

PATROL SOFTSHELL JACKET

SM-3X

PERFORMANCE

- Lightweight tech shell construction with windproof, water-resistant, breathable membrane to keep you warm and dry
- Reflective prints on the front and back for visibility
- Easily converted into a vest by simply unzipping the sleeves and placing them into the mesh internal pocket
- Water-resistant front zip
- Four front pockets that are easily accessible
- One sleeve pocket

CONSTRUCTION

- Fleece-lined interior for added comfort
- Adjustable hook & loop wrist cuff closures
- Shock cord waistband helps keep jacket in place

FIT

- Standard: not too slim, not too loose

149€95



BLACK
373-680



GREY
373-687

PATROL VEST

SM-3X

PERFORMANCE

- Lightweight tech shell construction with windproof, water-resistant, breathable membrane
- Reflective prints on the front and back for visibility
- Water-resistant front zip
- Four front pockets that are easily accessible
- One internal rear pocket

CONSTRUCTION

- Fleece-lined interior for added comfort
- Shock cord waist band helps keep jacket in place
- Ventilated back panel
- Drop tail panel for increased coverage

FIT

- Standard: not too slim, not too loose

99€95



BLACK
373-690





CLEAR
354 - 6110

FLY RAIN JACKET

SM-2X

PERFORMANCE

- Low-profile elastic collar and sleeve cuffs
- Gusseted rear vent across upper back for added ventilation
- Vented mesh under arms
- Waterproof main zipper
- Easy to stow

CONSTRUCTION

- Elastic waist
- Screen printed logos

49€95



BLACK
12-1864

TOOL PACK

CONSTRUCTION

- YKK® Shockonlok™ main buckle resists water absorption often caused by high humidity. Properties are stable under extreme temperatures such as cold mountain top air and desert heat

FEATURES

- Removable flap reduces weight for lighter ride days and less hassle for mechanics
- Tire tube pocket is big enough to fit a spare tube or other necessities
- Tool compartment with key loop, clear plastic bolt pocket, fold down mesh pocket and elastic straps specifically designed to fit the basic tools needed to fix your bike on the trail
- Water bottle side pocket
- Side tool loops are wide and clutter free

FIT

- Nylon grip strap helps keep the strap from loosening up and keeps it secure to the body
- No-slip back keeps pack in a secure position on rough terrain



49€95

HYDRO PACKS



109€95

XC 100 HYDRO PACK

3 LITERS

CONSTRUCTION

- HydraPak brand BPA and PVC free 100 fl. oz./3-liter Elite™ reservoir with large slide top opening
- Plug-N-Play™ quick disconnect for convenient tube removal
- High-flow Blaster™ bite valve self-seals after each sip and features a twist on/off bar to prevent leaks when not in use
- Chest Harness system with hook & loop elastic bands for flexibility

FEATURES

- Stowable outer mesh carry-all flap
- Front pocket for smaller accessories
- Main compartment with two inner pocket sleeves
- Cell phone compartment
- Key clip
- Reflective branding and zippers

FIT

- Fine-tune attachments on side straps allows a custom fit for smaller riders
- Larger quick release buckles for easy on and off with gloves
- Strap length adjustment from the inner main compartment with Tensionlock® buckles

BLACK 28-5202



99€95

XC 70 HYDRO PACK

2 LITERS

CONSTRUCTION

- HydraPak brand BPA and PVC free 70 fl. oz./2-liter Elite™ reservoir with large slide top opening
- Plug-N-Play™ quick disconnect for convenient tube removal
- High-flow Blaster™ bite valve self-seals after each sip and features a twist on/off bar to prevent leaks when not in use
- Chest Harness system with hook & loop elastic bands for flexibility

FEATURES

- Stowable outer mesh carry-all flap
- Front pocket for smaller accessories
- Main compartment with two inner pocket sleeves
- Cell phone compartment
- Key clip
- Reflective branding and zippers

FIT

- Fine-tune attachments on side straps allows a custom fit for smaller riders
- Larger quick release buckles for easy on and off with gloves
- Strap length adjustment from the inner main compartment with Tensionlock® buckle

BLACK 28-5201



89€95

XC 30 HYDRO PACK

1 LITER

CONSTRUCTION

- HydraPak brand BPA and PVC free 30 fl. oz./1-liter Elite™ reservoir with large slide top opening
- Plug-N-Play™ quick disconnect for convenient tube removal
- High-flow Blaster™ bite valve self-seals after each sip and features a twist on/off bar to prevent leaks when not in use
- Chest Harness system with hook & loop elastic bands for flexibility

FEATURES

- Stowable outer mesh carry-all flap
- Front pocket for smaller accessories
- Main compartment with two inner pocket sleeves
- Key clip
- Reflective branding and zippers

FIT

- Fine-tune attachments on side straps allows a custom fit for smaller riders
- Larger quick release buckles for easy on and off with gloves
- Strap length adjustment from the inner main compartment with Tensionlock® buckle

BLACK 28-5200

HYDRAPAK REPLACEMENT PARTS

HydraPak Shapeshift 1.5L bladder with hose and bite valve	28-5116
HydraPak Shapeshift 2L bladder with hose and bite valve	28-5117
HydraPak Shapeshift 3L bladder with hose and bite valve	28-5118
Blaster bite valve	28-5119
Replacement hose	28-5120
Hydrapak insulated hose with bite valve	28-5121



49€95

BLACK
28-5165

ORANGE/BLACK
28-5168

HYDRO PACK

70 OUNCES

CONSTRUCTION

- 70oz. bladder keeps you hydrated on those long rides
- Lightweight but rugged nylon construction
- High flow rate bite valve
- Reflective taping

FEATURES

- Two external pockets hold snacks, keys, wallet, and more

FIT

- Fully adjustable mesh shoulder straps



Replacement bladder with hose and bite valve	28-5123B
Replacement mouthpiece	28-5124

FR5 BOOT

7-13

CONSTRUCTION

- 3D molded plastic shift panels with added grooves and texture that saves boots from premature wear
- TPU (thermoplastic polyurethane) heel pieces connect with lateral/medial TPU pieces for full coverage
- Pre-shaped molded plastic 3D shin adds impact resistance and comfort
- Soft interior foam surrounds the ankle and collar
- Contoured TPU calf plate
- Full textile lining
- Secure 4 buckle closure system
- 3D injected heel reinforcement plate

FEATURES

- CE Approved to EN13634:2015
- Innovative one-piece plastic injected 'fish tail' midsole
- Molded outsole provides a modern stylish look and helps to keep the weight down
- Outsole rubber compound provides good levels of grip while remaining durable
- Padded microfiber gaiter provides a comfortable rim around calf while sealing the opening from debris
- Bio-mechanical pivots on the inside and outside of the ankle for increased stability and support
- Rubber heat shield is long lasting, won't melt, and provides good grip

FIT

- Adjustable aluminum quick-lock buckles provide a solid locked-in feel and open design keeps dirt from clogging the function



GREY/BLUE
364-711



RED/BLACK/WHITE
364-710



BLACK
364-700



WHITE
364-704

299€95



GREY/BLACK
364-680



BLACK
364-671



RED/BLACK
364-673



WHITE/BLACK
364-675

MAVERIK BOOT

7-14

CONSTRUCTION

- 3D molded plastic shift panels with added grooves and texture that saves boots from premature wear
- Articulated rear ankle provides subtle flexibility to bend in the foot, yet remains supportive
- Pre-shaped molded plastic 3D shin adds impact resistance and comfort
- Inner ankle panel made of durable and flexible plastic

FEATURES

- CE Approved to EN13634:2015
- Molded outsole provides a modern stylish look and helps to keep the weight down
- Outsole rubber compound provides good levels of grip while remaining durable
- Rubber heat shield is long lasting, will not melt, and provides good grip
- Elastic gaiter provides a comfortable rim around calf while sealing the opening from debris
- Innovative one-piece plastic injected 'fish tail' midsole

FIT

- Adjustable quick-lock buckles provide a solid locked-in feel and open design keeps dirt from clogging the function
- Adult = 3-buckle

199€95

MAVERIK ENDURO BOOT

7-14

CONSTRUCTION

- 3D molded plastic shift panels with added grooves and texture that saves boots from premature wear
- Articulated rear ankle provides subtle flexibility to bend in the foot, yet remains supportive
- Pre-shaped molded plastic 3D shin adds impact resistance and comfort
- Inner ankle panel made of durable and flexible plastic

FEATURES

- CE Approved to EN13634:2015
- Aggressive molded outsole provides an ideal lug pattern for better traction and keeps the weight down
- Outsole rubber compound provides good levels of grip while remaining durable and light weight
- Rubber heat shield is long lasting, will not melt, and provides good grip
- Elastic gaiter provides a comfortable rim around calf while sealing the opening from debris
- Innovative one-piece plastic injected 'fish tail' midsole

FIT

- Adjustable quick-lock buckles provide a solid locked-in feel and open design keeps dirt from clogging the function
- Adult = 3-buckle

199€95



BLACK
364-698



GREY/BLACK
364-680



BLACK
364-671



RED/BLACK
364-673



WHITE/BLACK
364-675

MAVERIK BOOT

7-14

CONSTRUCTION

- 3D molded plastic shift panels with added grooves and texture that saves boots from premature wear
- Articulated rear ankle provides subtle flexibility to bend in the foot, yet remains supportive
- Pre-shaped molded plastic 3D shin adds impact resistance and comfort
- Inner ankle panel made of durable and flexible plastic

FEATURES

- CE Approved to EN13634:2015
- Molded outsole provides a modern stylish look and helps to keep the weight down
- Outsole rubber compound provides good levels of grip while remaining durable
- Rubber heat shield is long lasting, will not melt, and provides good grip
- Elastic gaiter provides a comfortable rim around calf while sealing the opening from debris
- Innovative one-piece plastic injected 'fish tail' midsole

FIT

- Adjustable quick-lock buckles provide a solid locked-in feel and open design keeps dirt from clogging the function
- Adult = 3-buckle

679€95



MAVERIK LT
364-681 / Noir
Taille 7 à 13

139€⁹⁵

MAVERIK LT ENDURO
E364-681 / Noir
Taille 7 à 13

139€⁹⁵



REVEL LITE ROOST GUARD

ADULT

CONSTRUCTION

- Chest and back plastic shells are constructed from a plastic that balances high levels of flexibility with low weight
- Thermoformed soft BioFoam chassis for increased comfort
- CE rated to EN14021:2003 Stone Shield

FEATURES

- Revolutionary BioFoam® chassis attachment system eliminates injury-causing plastic rivets and utilizes soft plastics and TPR rubbers without high points that could injure in the event of an impact
- Chest and back plastic shells highly perforated for maximum airflow helping keep the rider cool
- Air channels molded into the BioFoam allow hot air to escape
- Integrated Y-strap system for modular use with or without the back plate

FIT

- Adjustable shoulder straps for a custom comfortable fit
- Easy-to-use waist belt buckles integrated into the chest plastic
- Low-profile design can be worn under jersey

BLACK

SM/MD 36-1604 8M

LG/XL 36-1604 8L

WHITE

SM/MD 36-1604 9M

LG/XL 36-1604 9L

159€95



BLACK



Back



WHITE



Back



BLACK 36-16041
CE BLACK 36-16051



WHITE 36-16040
CE WHITE 36-16050



Back

REVEL ROOST GUARD RACE

ADULT

CONSTRUCTION

- Revolutionary BioFoam® chassis attachment system eliminates injury-causing plastic rivets and utilizes soft plastics and TPR rubbers without high points that could injure in the event of an impact
- Air channels molded into the BioFoam® allow hot air to escape

CE CONSTRUCTION

- CE rated protection created using a triple layer, high density memory foam in between the outer plastic and the BioFoam® that is in contact with the user. Triple layer construction (as opposed to a single thick layer) allows layers to move relative to one another further improving impact performance
- Chest CE rated to EN14021:2003 Stone Shield
- Back CE rated to EN1621-2

FEATURES

- Full upper torso plastic roost deflector
- Neck brace compatible design: simply slide underneath the plastics or remove the plastic panels on the chest and back depending on neck brace design
- Removable thermoformed soft BioFoam® chassis for increased comfort and easy washing
- Multiple vents for maximum airflow

FIT

- Adjustable shoulder straps for a custom comfortable fit
- Easy-to-use waist belt buckles integrated into the chest plastic

149€95

REVEL ROOST GUARD OFFROAD

ADULT

CONSTRUCTION

- Revolutionary BioFoam® chassis attachment system eliminates injury-causing plastic rivets and utilizes soft plastics and TPR rubbers without high points that could injure in the event of an impact
- Air channels molded into the BioFoam allow hot air to escape

CE CONSTRUCTION

- CE rated protection created using a triple layer, high density memory foam in between the outer plastic and the BioFoam® that is in contact with the user. Triple layer construction (as opposed to a single thick layer) allows layers to move relative to one another further improving impact performance
- Chest CE rated to EN14021:2003 Stone Shield
- Back CE rated to EN1621-2

FEATURES

- Full upper torso plastic roost deflector
- Neck brace compatible design: simply slide underneath the plastics or remove the plastic panels on the chest and back depending on neck brace design
- Removable thermoformed soft BioFoam chassis for increased comfort and easy washing
- Multiple vents for maximum airflow

FIT

- Adjustable shoulder straps for a custom comfortable fit
- Easy-to-use waist belt buckles integrated into the chest plastic



WHITE 36-16044
CE WHITE 36-16054



BLACK 36-16045
CE BLACK 36-16055



Back

169€95



Back



CE BLACK 36-16060



Back



CE WHITE 36-16065

YOUTH REVEL ROOST GUARDS OFFROAD

CONSTRUCTION

- CE rated protection chest and back created using a triple layer, high density memory foam in between the outer plastic and the spacer mesh that is in contact with the user. Triple layer construction (as opposed to a single thick layer) allows layers to move relative to one another further improving impact performance
- Chest level 1 – Certified to CE prEN1621-3
- Back level 1 – Certified to CE EN1621-2
- Revolutionary chassis attachment system eliminates injury-causing plastic rivets and utilizes soft plastics and TPR rubbers without high points that could injure in the event of an impact

FEATURES

- Neck brace compatible design: simply slide underneath the plastics panels
- Easy-to-use waist belt buckles integrated into the chest plastic
- Multiple vents for maximum airflow
- Shoulder and arm protection
- Hand washable

FIT

- Adjustable hook & loop fasteners, fully padded side/flank protection
- Adjustable shoulder straps for a custom comfortable fit

169€⁹⁵



TREVOR
BOLLINGER

BARRICADE LONG SLEEVE SUIT

YOUTH-2X

CONSTRUCTION

- CE Approved E3T PU foam pads in the back, shoulders and elbows
- Perforated EVA foam padding in the chest, kidney and biceps
- Back pad certified to EN1621-2 Level 1
- Limb pads certified to EN1621-1 Level 1
- Flatlock stitching used for comfort
- Highly breathable open mesh

FEATURES

- Body contoured front area to fit best in a riding position
- Highly breathable

FIT

- Center zip on chest for easy on and off
- Slim-fitting

YOUTH 360-9740Y

SM 360-9740S

MD 360-9740M

LG 360-9740L

XL 360-9740X

2X 360-97402X



CE BLACK



Back

YOUTH

139€95

ADULT

149€95

BARRICADE ZIP VEST

SM/MD-LG/XL

CONSTRUCTION

- Perforated EVA (Ethylene Vinyl Acetate) foam padding in the chest and kidney areas
- CE approved flexible E3T™ memory foam back protector
- Back protector certified to EN1621-2 Level 1
- Flatlock stitch seam construction for added comfort

FEATURES

- Body contoured front area to fit best in riding position
- Highly breathable, open mesh
- Removable chest and back padding

FIT

- Center zip on chest makes for easy on and off
- Slim-fitting

SM/MD 360-9705
LG/XL 360-9706

99€95



CE BLACK



Back

BARRICADE PULLOVER VEST

YOUTH, SM/MD-LG/XL

CONSTRUCTION

- Dual layer perforated and thermoformed EVA (Ethylene Vinyl Acetate) foam padding in the chest shields from painful roost and branches
- Stretch mesh main construction

FEATURES

- Body contoured front area to fit best in a riding position
- Highly breathable
- Ultra-lightweight

FIT

- Shirt style pullover design
- Slim-fitting

YOUTH 360-9700
SM/MD 360-9701
LG/XL 360-9702

59€95



BLACK



Back



CE BLACK



REVEL IMPACT SHORTS WITH RHEON

SM-XL

CONSTRUCTION

- Its Adaptive Impact System (AIS) whose high-performance ecosystem of structural designs and energy mitigating materials — including RHEON, a leading-edge viscoelastic material — is fine-tuned to greatly improve impact management.
- Thermoformed lightweight EVA (Ethylene Vinyl Acetate) foam padding at thigh and coccyx
- Rheon Technology Hip protection CE tested and certified to EN1621-1 Level 1

FEATURES

- Multi-panel technical fabric main construction using flatlock stitching is highly breathable and provides a great fit
- Extra wide and comfortable waist band
- Silicon grip on elastic leg cuffs
- Chamois pad for increased riding comfort

FIT

- Pre-shaped to give a better ergonomic fit and function

SM	360-9756S
MD	360-9756M
LG	360-9756L
XL	360-9756X

139€95

BARRICADE COMPRESSION SHORTS

SM-XL

CONSTRUCTION

- Multi-panel technical fabric main construction is highly breathable and provides a great fit

FEATURES

- Low profile lightweight under armor for all riding styles
- Thermoformed and perforated lightweight EVA (Ethylene Vinyl Acetate) foam padding in strategic positions to support hips, thighs and tailbone

FIT

- Long leg-length with gripper elastic band provides a secure fit
- Ultra-comfort waist band

SM 360-9755S
MD 360-9755M
LG 360-9755L
XL 360-9755X

49€95



BARRICADE KIDNEY BELT YOUTH, SM/MD-LG/XL

SM/MD-LG/XL

CONSTRUCTION

- Supportive perforated and thermoformed EVA foam support panels for a conforming yet comfortable fit

FEATURES

- Ergonomically designed for maximum stability of the torso and lower back

FIT

- Dual elastic waistband for a secure and precise fit

YOUTH 350-06008
SM/MD 350-06009
LG/XL 350-06010

44€95



BARRICADE LITE GUARDS ELBOW

SM-XL

CONSTRUCTION

- FLY Racing's HDM (High Density Memory) protectors are made of a special blend viscoelastic foam with memory function allowing for repeat impacts that passes CE EN1621-1 rating to level 1
- Hidden stitching prevents fraying and adds to durability

FEATURES

- The protective pads feature an array of breath holes to increase airflow
- Extended upper cuffs and internal silicon gripper bands help with slipping
- The pads are both soft, lightweight, and low profile

FIT

- 4 way stretch mesh panels at the rear help in giving a great fit and allowing air to escape

SM	28-3150	LG	28-3152
MD	28-3151	XL	28-3153

79€95



CE BLACK

BARRICADE LITE GUARDS KNEE

SM-XL

CONSTRUCTION

- FLY Racing's HDM (High Density Memory) protectors are made of a special blend viscoelastic foam with memory function allowing for repeat impacts that passes CE EN1621-1 rating to level 1
- Hidden stitching prevents fraying and adds to durability

FEATURES

- The protective pads feature an array of breath holes to increase airflow
- Extended upper cuffs and internal silicon gripper bands help with slipping
- The pads are both soft, lightweight, and low profile

FIT

- 4 way stretch mesh panels at the rear help in giving a great fit and allowing air to escape

SM	28-3140	LG	28-3142
MD	28-3141	XL	28-3143

79€95



CE BLACK



CE 28-3126

BARRICADE FLEX GUARDS ELBOW

CONSTRUCTION

- Asymmetric impact resistant and highly breathable plastic shell design for a left and right specific fit
- Passes CE EN1621-1 Level 1

FEATURES

- Perforated biofoam padding increases airflow
- 2 panel chassis construction allows the pads to flex easily for increased comfort

FIT

- Strategically placed adjustable elastic straps to hold the pads in position

39€95



CE 28-3121

BARRICADE GUARDS ELBOW

CONSTRUCTION

- Impact-resistant plastic shell
- Lycra® laminated BioFoam®
- Passes CE EN1621-2:2014 Level 1

FIT

- Two adjustable straps

24€95



CE 28-3111

BARRICADE FLEX GUARDS KNEE/SHIN

CONSTRUCTION

- Impact-resistant ABS plastic construction
- Perforated BioFoam® padding increases airflow
- Passes CE EN1621-2:2014 Level 1

FEATURES

- Wrap-around foam padding extends to the sides of your legs for better coverage
- Calf pad adds comfort
- Sold as a set

FIT

- Three adjustable straps for best fit

39€95



CE 28-3116

BARRICADE GUARDS KNEE/SHIN

CONSTRUCTION

- Impact-resistant plastic shell
- Lycra® laminated BioFoam®
- Passes CE EN1621-2:2014 Level 1

FIT

- Two adjustable straps

24€95

YOUTH BARRICADE GUARDS ELBOW

CONSTRUCTION

- Impact-resistant plastic shell
- Lycra® laminated BioFoam®
- Passes CE EN1621-2:2014 Level 1

FIT

- Two adjustable straps

24€95



CE BLACK 28-3120

YOUTH BARRICADE MINI GUARDS ELBOW

CONSTRUCTION

- Uses perforated EVA foam chassis for comfort

FEATURES

- Plastic elbow/forearm coverage

FIT

- Aimed at riders aged 4-7
- Elastic strap system with hook and loop velcro adjustment

14€95



BLACK 28-3130

YOUTH BARRICADE GUARDS KNEE/SHIN

CONSTRUCTION

- Impact-resistant plastic shell
- Lycra® laminated BioFoam®
- Passes CE EN1621-2:2014 Level 1

FIT

- Two adjustable straps

24€95



CE BLACK 28-3115

YOUTH BARRICADE FLEX GUARDS KNEE/SHIN

CONSTRUCTION

- Impact-resistant ABS plastic construction
- Perforated BioFoam® padding increases airflow
- Passes CE EN1621-2:2014 Level 1

FEATURES

- Wrap-around foam padding extends to the sides of your legs for better coverage
- Calf pad adds comfort
- Sold as a set

FIT

- Three adjustable straps for best fit

39€95



CE BLACK 28-3110



LIGHTWEIGHT 354-6310
HEAVYWEIGHT 354-6312

49€95



LIGHTWEIGHT 354-6311
HEAVYWEIGHT 354-6313

49€95

BASE LAYERS LIGHTWEIGHT

TOP SM-2X
BOTTOM SM-2X

CONSTRUCTION

- High-IQ™ Advanced Evaporation Technology – fast wicking hollow-core fibers transport moisture to the outer surface to dry quickly
- Flat-lock stitch seam construction

FEATURES

- Multi-direction stretch fabric allows for unrestricted range of motion
- Open fabric structure offers lightweight warmth and all-day comfort
- UPF 40+ sun protection
- Polygiene® odor Control Technology

FIT

- Ergonomic panels are form fitting (non-compression)

BASE LAYERS HEAVYWEIGHT

TOP SM-2X
BOTTOM SM-2X

CONSTRUCTION

- Extra warm fabric that still wicks moisture fast and dries quickly
- Flat-lock stitch seam construction

FEATURES

- Multi-directional stretch fabric allows for unrestricted range of motion
- UPF 40+ sun protection
- Polygiene® Odor Control Technology

FIT

- Ergonomic panels are form fitting (non-compression)

MX SOCKS

THIN SM/MD-LG/XL
THICK SM/MD-LG/XL

CONSTRUCTION

- Durable weave construction

FEATURES

- Woven graphics
- Padded heel and toe for added comfort
- Arch and ankle support

FIT

- Boot length sock
- Two versions: thick or thin



THIN BLACK
SM/MD 350-0540S
LG/XL 350-0540L



THIN GREY
SM/MD 350-0541S
LG/XL 350-0541L



THIN YELLOW
SM/MD 350-0542S
LG/XL 350-0542L

14€95



THICK RED/GREY
SM/MD 350-0550S
LG/XL 350-0550L



THICK PINK/BLUE
SM/MD 350-0551S
LG/XL 350-0551L



THICK GREY/BLACK
SM/MD 350-0552S
LG/XL 350-0552L

MX PRO SOCKS

SM/MD-LG/XL

CONSTRUCTION

- Coolmax construction helps to wick sweat and keep you comfortable
- Durable weave construction

FEATURES

- Woven graphics
- Arch and ankle support

FIT

- Boot length sock
- Two versions: thick and thin

19€95



HI-VIS/BLACK
SM/MD 350-0530S
LG/XL 350-0530L



BLUE/BLACK
SM/MD 350-0531S
LG/XL 350-0531L



RED/BLACK
SM/MD 350-0532S
LG/XL 350-0532L



BLACK/GREY/WHITE
SM/MD 350-0447S
LG/XL 350-0447L



HI-VIS/BLACK/BLUE
SM/MD 350-0448S
LG/XL 350-0448L

KNEE BRACE SOCKS

SM/MD-LG/XL

CONSTRUCTION

- Coolmax construction helps wick sweat and keep you comfortable
- Stretch mesh panels for comfortable fit

FEATURES

- Help reduce irritation and abrasion from knee brace
- Arch and ankle supports
- Padded toe and heel
- Printed and woven graphics

FIT

- Top of sock extends beyond the top of most knee braces

49€95



FLY OGIO 9800

34"H X 16.5"W X 15.5"D
7500 CU IN. 14.2 LBS

\$399.95

CONSTRUCTION

- Structural Load Equalization Deck (SLED™) wheeled chassis system
- Integrated foam panel construction throughout entire bag for added protection
- Oversized heavy-duty treaded wheels with extra clearance

FEATURES

- Wide mouth LID opening for easy access to all compartments and specialty packets
- Ambidextrous retractable handle
- Adjustable main compartment dividers
- Multiple zippered mesh organization pockets
- Write on identification tag

BLACK/GREY 28-5000



FLY OGIO LAYOVER

22"H X 14"W X 10"D

\$239.95

CONSTRUCTION

- Custom in-line skate wheels
- Locking retractable handles
- Multiple grab handles

FEATURES

- Two-stage Pullman handle
- Internal compression straps
- Two low-profile external pockets
- Custom OGIO ID sleeve
- Airline regulation carry-on size with 3" expansion zipper (must be checked when expanded)

BLACK/GREY 28-5001



FLY OGIO URBAN

19"H X 13.5"W X 8.5"D

\$119.95

CONSTRUCTION

- HUB (Hybrid Unibody Back panel) for comfort
- Increased shoulder strap foam padding
- Adjustable ergonomic hybrid yoke style shoulder harness with adjustable sternum strap

FEATURES

- Dedicated fleece-lined top-loading laptop compartment fits most 17" laptops and iPad™/tablet/e-readers
- Padded mouse/digital camera pocket
- Two fleece lined stash pockets
- Water bottle pocket with bottle lock feature
- Deluxe organization panel with zippered pocket
- Quick access expandable phone pocket

BLACK/GREY 28-5002



179€95

ROLLER GRANDE BAG 17"H X 16"W X 33"L

CONSTRUCTION

- Durable PVC backed polyester ripstop
- Durable smooth rolling rollerblade style wheels
- Large mesh panels and vent grommets allow dirty gear to breathe and dry

FEATURES

- Two large separate pockets on each end for easy storage of boots and dirty gear
- Large center main compartment to store bigger items
- Mud mat is accessible from the side of the bag
- Included adjustable shoulder strap
- Clear exterior business card sleeve
- Tool storage pocket and inside pockets
- Fleece-lined goggle pocket
- Telescoping handle

BLACK 28-5225



129€95

TOUR ROLLER BAG 11"H X 16"W X 28"L

CONSTRUCTION

- Durable PVC backed polyester ripstop
- Durable smooth rolling rollerblade style wheels
- Vent grommets allow dirty gear to breathe and dry

FEATURES

- Fleece-lined pockets for goggles and accessories
- Mud mat is accessible from the side of the bag
- Includes adjustable shoulder strap
- Clear exterior business card sleeve
- Telescoping handle

BLACK 28-5226



CARRY-ON BAG

14”H X 12”W X 19”L

CONSTRUCTION

- Durable PVC backed polyester ripstop

FEATURES

- Ideal for carry-on air travel
- Separate shoe compartment
- Clear exterior business card sleeve
- Comfortable molded rubber carry handles
- Removable padded shoulder strap

BLACK 28-5227

69€95



MAIN EVENT BACKPACK

19”H X 15”W X 7”D

CONSTRUCTION

- YKK® zippers
- Embroidered and TPR logos

FEATURES

- Padded front pocket
- Adjustable sternum strap
- Multiple internal accessory organizer pockets
- Separate padded side-entry laptop compartment
- Top small fleece-lined accessory pocket

BLACK 28-5228

69€95



HELMET GARAGE

11”H X 10”W X 16”L

CONSTRUCTION

- Durable PVC backed polyester ripstop
- Plastic bottom to keep helmet separated from the elements
- Custom metal vent eyelets
- Appliquéd and TPR logos

FEATURES

- Generous side pockets hold goggles and tear-offs
- Comfortable molded rubber carry handle
- Fleece liner protects helmet paint

BLACK 28-5229

49€95



A



B



C

29€95

JUMP PACK BACKPACK

18" H X 14" W X 6" D

CONSTRUCTION

- YKK® zippers
- Printed graphics

FEATURES

- Elasticized water bottle pockets on each side
- Internal divider
- Internal front pocket organizer
- Two zippered compartments

A	BLACK/WHITE	28-5073
B	BLUE/WHITE	28-5074
C	ROCKSTAR BLACK/GOLD	28-5075



A



B



C



D

14€95

QUICK DRAW BAG

18" H X 15" W

CONSTRUCTION

- 210D polyester fabric with Polyurethane (PU) coating
- Flat shoestring straps

FEATURES

- Sublimated artwork

A	BLACK/GREY/WHITE	28-5219
B	MINT/RED/BLACK	28-5220
C	RED/BLACK	28-5221
D	WHITE/RED/GREY	28-5222



DIRT LAUNDRY BAG 28" H X 21" W

CONSTRUCTION

- Heavy mesh construction
- Drawstring closure on top

FEATURES

- Keeps dirty and clean riding gear separate in your gear bag
- Black with graphics

BLACK 28-5158

19€95



GOGGLE GARAGE 5.5" H X 10.5" W X 16" L

CONSTRUCTION

- Durable PVC backed polyester ripstop
- YKK® Zippers – industry standard, abrasion resistant zippers
- Molded carrying handle
- Crush resistant case

FEATURES

- Five goggle storage slots
- Five lens storage pockets
- Fully adjustable storage slots
- Pocket for accessories and lenses
- 180° adjustable lid
- Hang loop conveniently hangs case on wall hook while in use

BLACK 28-5224

59€95

49€95



TOOL PACK

CONSTRUCTION

- YKK® Shockonlok™ main buckle resists water absorption often caused by high humidity. Properties are stable under extreme temperatures such as cold mountain top air and desert heat

FEATURES

- Removable flap reduces weight for lighter ride days and less hassle for mechanics
- Tire tube pocket is big enough to fit a spare tube or other necessities
- Tool compartment with key loop, clear plastic bolt pocket, fold down mesh pocket and elastic straps specifically designed to fit the basic tools needed to fix your bike on the trail
- Water bottle side pocket
- Side tool loops are wide and clutter free

FIT

- Nylon grip strap helps keep the strap from loosening up and keeps it secure to the body
- No-slip back keeps pack in a secure position on rough terrain

BLACK 12-1864



FLYRACING.COM



www.semc.pro